

SCALE: 1"=400'

ONE SHEET ONLY

PARCEL MAP N° 37-11

IN THE UNINCORPORATED TERRITORY OF
THE COUNTY OF MONO, STATE OF CALIFORNIA,
BEING A DIVISION OF A PORTION OF THE NORTH
HALF OF SECTION 14, T. 55, R. 30 E., M.D.M. 4

No. 3469

Filed for record this 20th day
of February, 1978, at
10:30 A.M. in Book 1 of
Parcel Maps at Page 26 at the
request of Gordon C. Holmes.

David M. Stahl
County Recorder

This map was prepared by me or under my direction
and was compiled from record data in conformance
with the requirements of the Subdivision Map Act
at the request of Mr. J. A. Bergum on April 25, 1972.
I hereby certify that it conforms with the approved tenta-
tive map and the conditions of approval thereof; that
all provisions of applicable state law and local ordin-
ances have been complied with.

This map has been examined this 14th day
of February, 1978, for conformance
with the requirements of Section 11575 of
the Subdivision Map Act.

Richard L. Paul P.E.
County Surveyor.

Gordon C. Holmes
Gordon C. Holmes RCE 10467

I hereby certify that this land division map was
approved by the Mono County Planning Commission
on the 13th day of February, 1978.

J. E. Bell
Planning Commission Chairman.

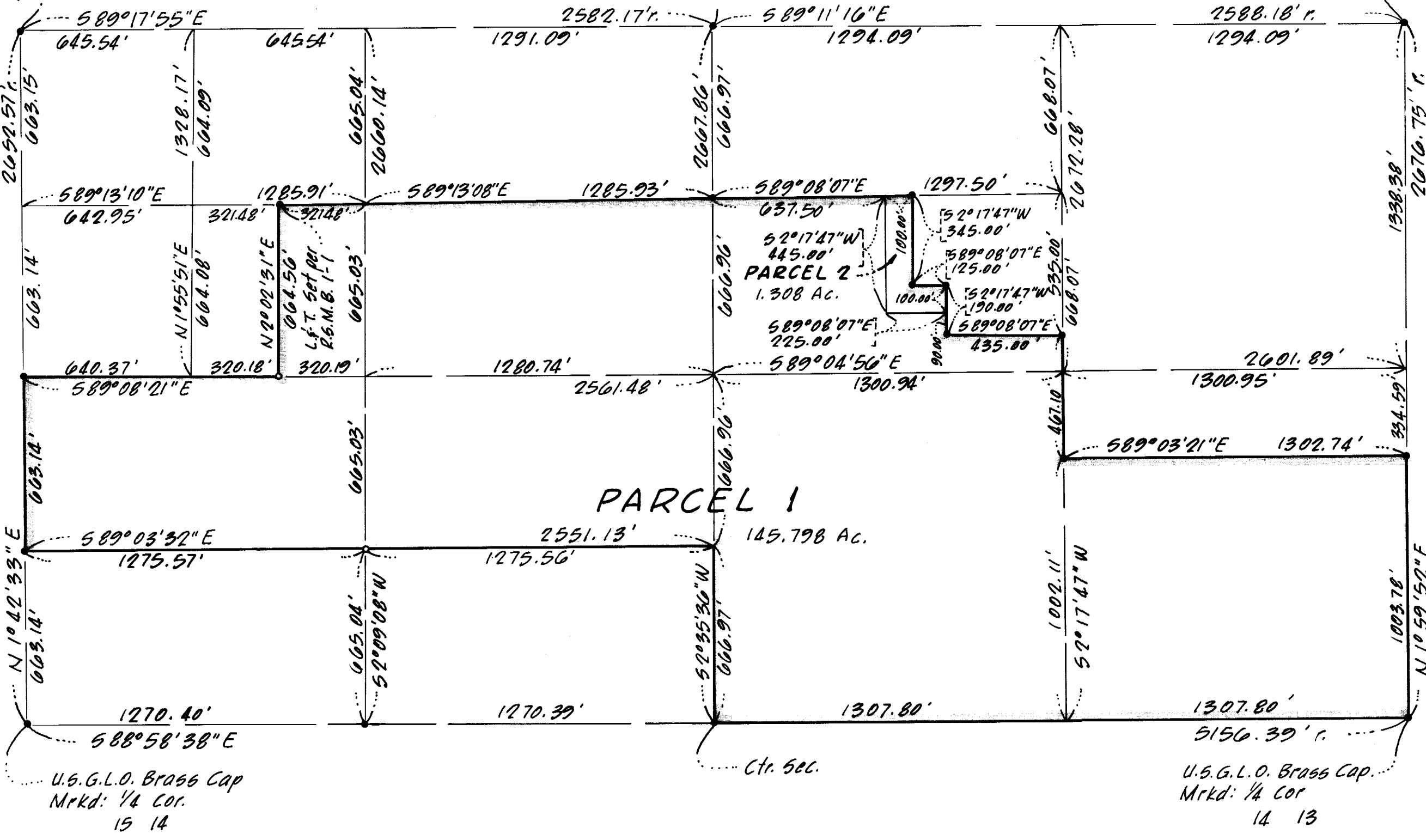
Record information shown on this map is
from the Record of Survey N° 37-1 filed in
Book 1, Page 1 of Records of Survey.

- Indicates a 2" I.P. Tagged R.C.E. 10467
set per Record of Survey N° 37-1 filed
in Book 1, Page 1 of Records of Survey,
unless otherwise noted.

L & T. Set in Top of
Granite Stone W/7
4 notches on S. &
2 notches on E. per
R.S. M.B. 1-1

U.S.G.L.O. Brass Cap.
Marked 1/4 Cor.
11
12
14

U.S.G.L.O. Brass Cap
Marked: T. 55. R. 30 E.
11
12
14
13



Doc. 1, 1/1/78, Pg. 26