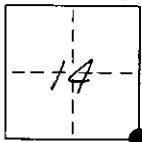


CORNER RECORD

COUNTY OF MONO T. 3N R. 25E M.D.M. MERIDIAN CALIFORNIA
 CORNER TYPE: GOV'T. CORNER ☒ MEANDER ☐ RANCHO ☐ CONTROL ☐ OTHER ☐
 CORNER IDENTIFICATION - DATE OF VISIT 11-30-1976



CORNER - LEFT AS FOUND ☐ FOUND AND TAGGED ☐ REESTABLISHED OBLITERATED CORNER ☐ REBUILT ☒

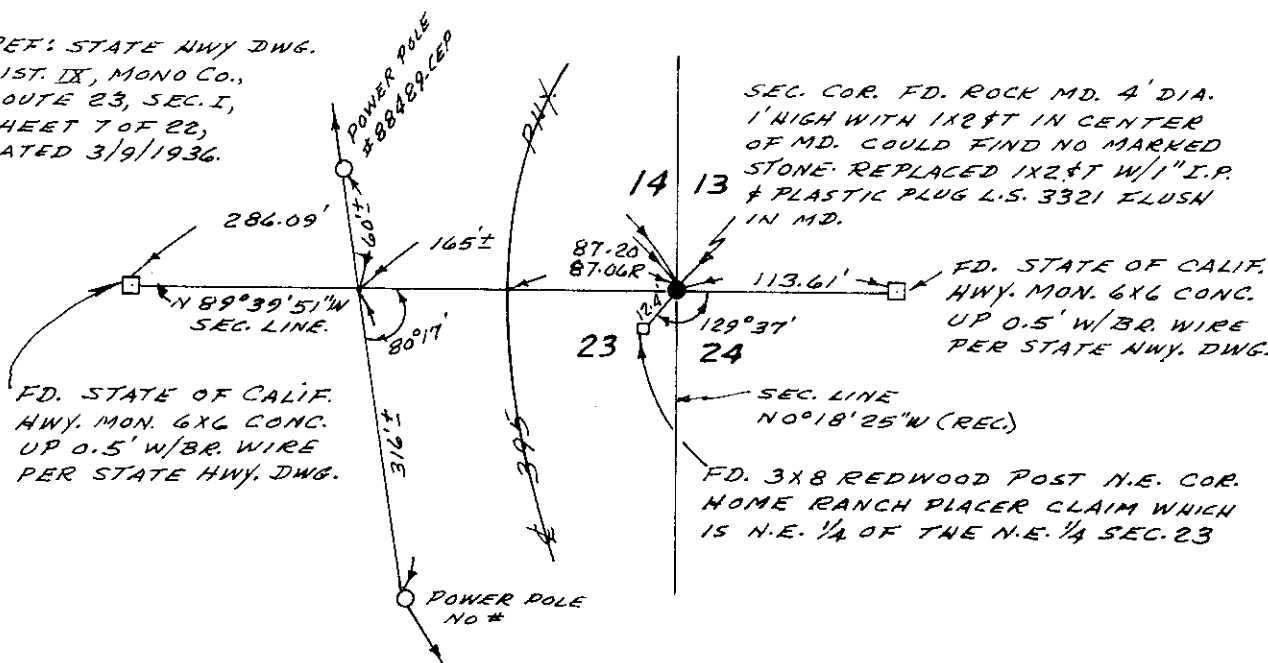
PHYSICAL DESCRIPTION OF CORNER FOUND: EVIDENCE AND METHOD USED TO IDENTIFY OR REESTABLISH
FD. ROCK MOUND 4' DIA. 1' HIGH WITH 1X2" T IN CENTER OF MOUND.
COULD FIND NO MARKED STONE. THE 1X2" T WAS ON LINE BETWEEN
(2) 6"X6" CONC. HWY MON. SHOWN ON STATE HWY DWG. DIST. IX,
MONO Co., ROUTE 23, SEC. I, SHEET 7 OF 22, 3/9/36.

PHYSICAL DESCRIPTION OF MONUMENTS REBUILT OR PERPETUATED REPLACED FD. 1X2" T WITH
1" I.P. 18" IN LENGTH WITH A PLASTIC PLUG L.S. 3321 FLUSH IN MOUND.

CALIFORNIA COORDINATE SYSTEM ORDER: FIRST ☐ SECOND ☐ THIRD ☐
 STATIONS USED: NGS (USC & GS) ☐ STATE ☐ COUNTY ☐ OTHER ☐ STATION _____ STATION _____
 ZONE _____ ELEVATION _____ NORTHINGS (Y) _____ EASTINGS (X) _____

SKETCH: (Include reference tie or witness points, remarks and topo of area)

REF: STATE HWY DWG.
 DIST. IX, MONO Co.,
 ROUTE 23, SEC. I,
 SHEET 7 OF 22,
 DATED 3/9/1936.



SURVEYOR'S CERTIFICATE

THIS CORNER RECORD WAS PREPARED BY ME OR UNDER MY DIRECTION IN CONFORMANCE WITH THE LAND SURVEYORS ACT ON January 26 1977.

SIGNED: [Signature]

L.S. or R.C.E. No.: 3321

SEAL

COUNTY SURVEYOR'S CERTIFICATE

THIS CORNER RECORD WAS RECEIVED 11-30 1976 AND EXAMINED AND FILED 11-30 1976

BY: [Signature]

TITLE: _____

DOCUMENT No. 3N 25-14-1

STATEMENT ON BACK OF SHEET

YES ☐ NO ☐