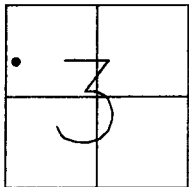


CORNER RECORD

Document Number 01218

City of SALIDA County of STANISLAUS, California

Brief Legal Description MONUMENT AT INTERSECTION OF MAGNOLIA STREET AND PARKS AVENUE



CORNER TYPE

Government Corner ☐ Control ☐
Meander ☐ Property ☐
Rancho ☐ Other ☒
Date of Survey 10-29-99

COORDINATES

(Optional)

N. _____
E. _____
Zone _____ Datum _____
Elev. _____

T3S, R8E

Corner - Left as found ☒ Found and tagged ☐ Established ☐ Reestablished ☐ Rebuilt ☐

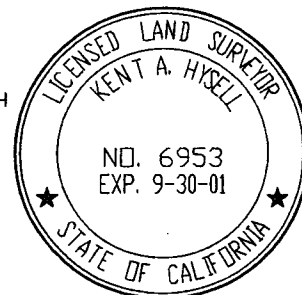
Identification and type of corner found: Evidence used to identify or procedure used to establish or reestablish the corner: FOUND 4" DIA CONCRETE MONUMENT WITH METAL PIN IN CENTER, AT INTERSECTION OF MAGNOLIA STREET AND PARKS AVENUE

A description of the physical condition of the monument as shown and as set or reset: SET MONUMENT WELL AROUND 4" CONCRETE MONUMENT WITH METAL PIN IN CENTER

SURVEYOR'S STATEMENT

THIS CORNER RECORD WAS PREPARED BY ME OR UNDER MY DIRECTION IN CONFORMANCE WITH THE LAND SURVEYORS' ACT ON DECEMBER 21 19 99.

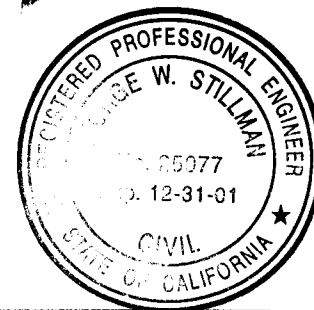
SIGNED Kent A. Hysell L.S. NUMBER 6953



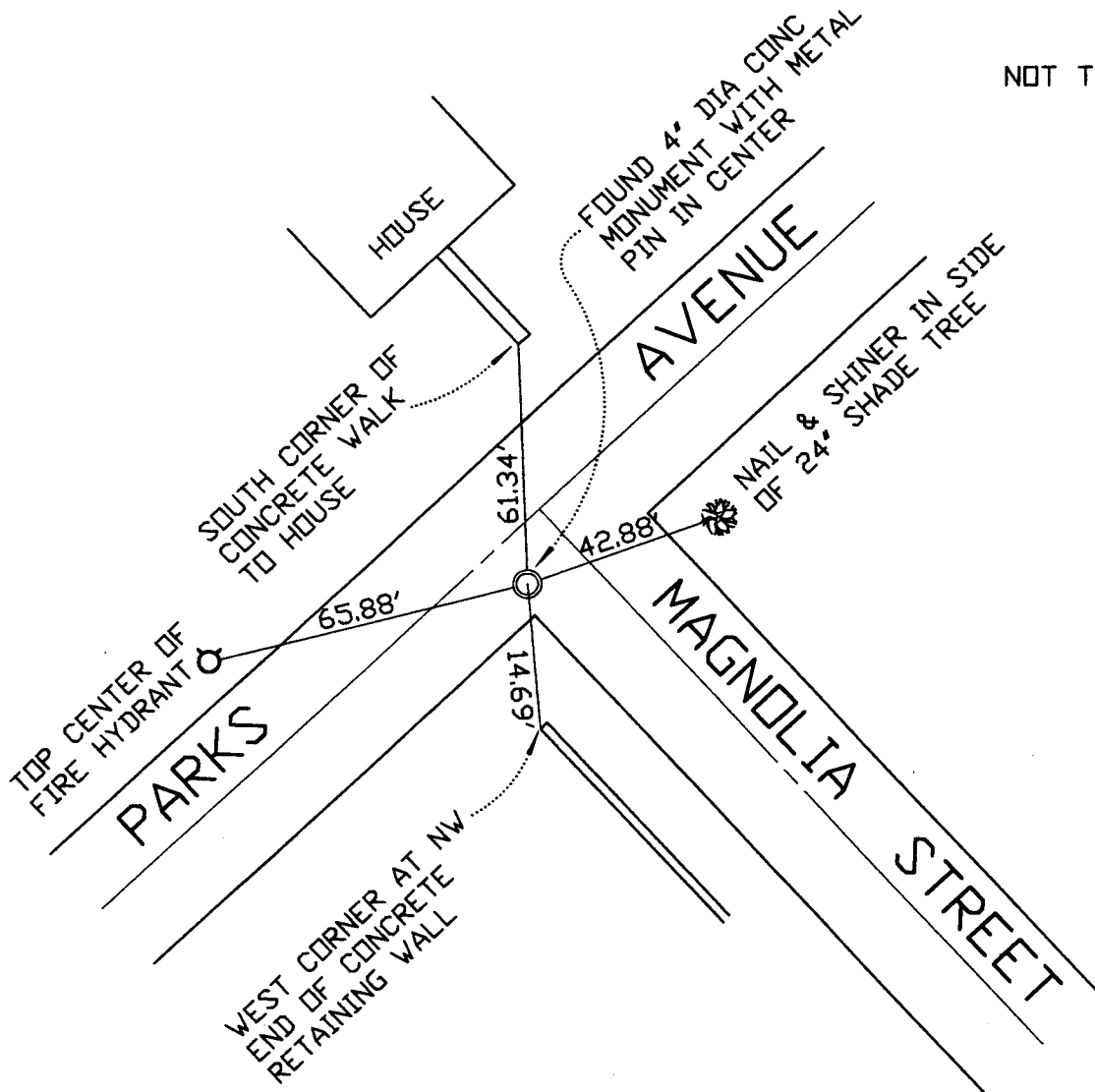
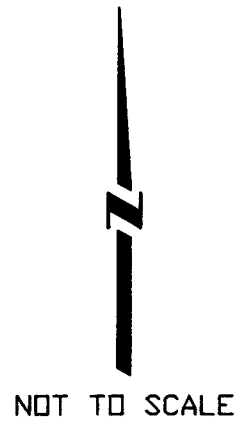
COUNTY SURVEYOR'S STATEMENT

THIS CORNER RECORD WAS RECEIVED _____ 20____ AND EXAMINED
AND FILED 3-29- 2000.

SIGNED John TITLE _____



COUNTY SURVEYOR'S COMMENT



DOC. NUM. 01218