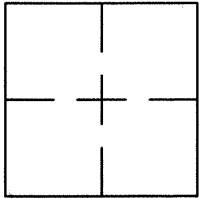


CORNER RECORDDocument Number CR 8863City of EDEN TOWNSHIPCounty of ALAMEDA, CaliforniaBrief Legal Description BRASS DISC MONUMENT LOCATED WITHIN THE INTERSECTION OF MEEKLAND AVE AND PASEO GRANDE.**CORNER RECORD**

Government Corner ☐ Control ☒
 Meander ☐ Property ☐
 Rancho ☐ Other ☐
 Date of Survey 8/24/16

COORDINATES
(Optional)

N. 2075660
 E. 6093849
 Zone _____ Datum _____
 Elev. _____

Corner — Left as found ☒ Found and tagged ☐ Established ☐ Reestablished ☐ Rebuilt ☐

Identification and type of corner found: Evidence used to identify or procedure used to establish of reestablish the corner:
FOUND BRASS DISC WITH NIPPLE IN MONUMENT WELL.

THIS POINT WAS REFERENCED PRIOR TO A CONSTRUCTION PROJECT IN THE VICINITY.

A description of the physical condition of the monument as found and as set or reset: _____

FOUND AND SET POINTS AS SHOWN ON PAGE 2.

THE TIES SHOWN HEREON ARE FOR THE PURPOSE OF PERPETUATING FOUND MONUMENTATION.

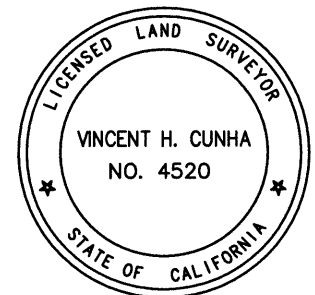
NO CLAIM IS MADE AS TO THE RELATIONSHIP OF THE POINTS OR LINES SHOWN HEREON TO

TRUE BOUNDARY LOCATIONS.

SURVEYOR'S STATEMENT

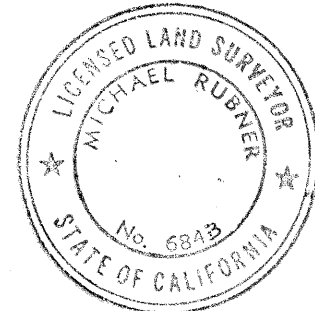
This Corner Record was prepared by me or under my direction in conformance with
 the Land Surveyors' Act on AUGUST 25, 20 16.

Signed Vincent H. Cunha L.S. Number LS 4520
VINCENT H. CUNHA

**COUNTY SURVEYOR'S STATEMENT**

This Corner Record was received 31 AUGUST 2016 and examined
 and filed 7 OCTOBER 2016.

Signed Michael Rubner Title COUNTY SURVEYOR



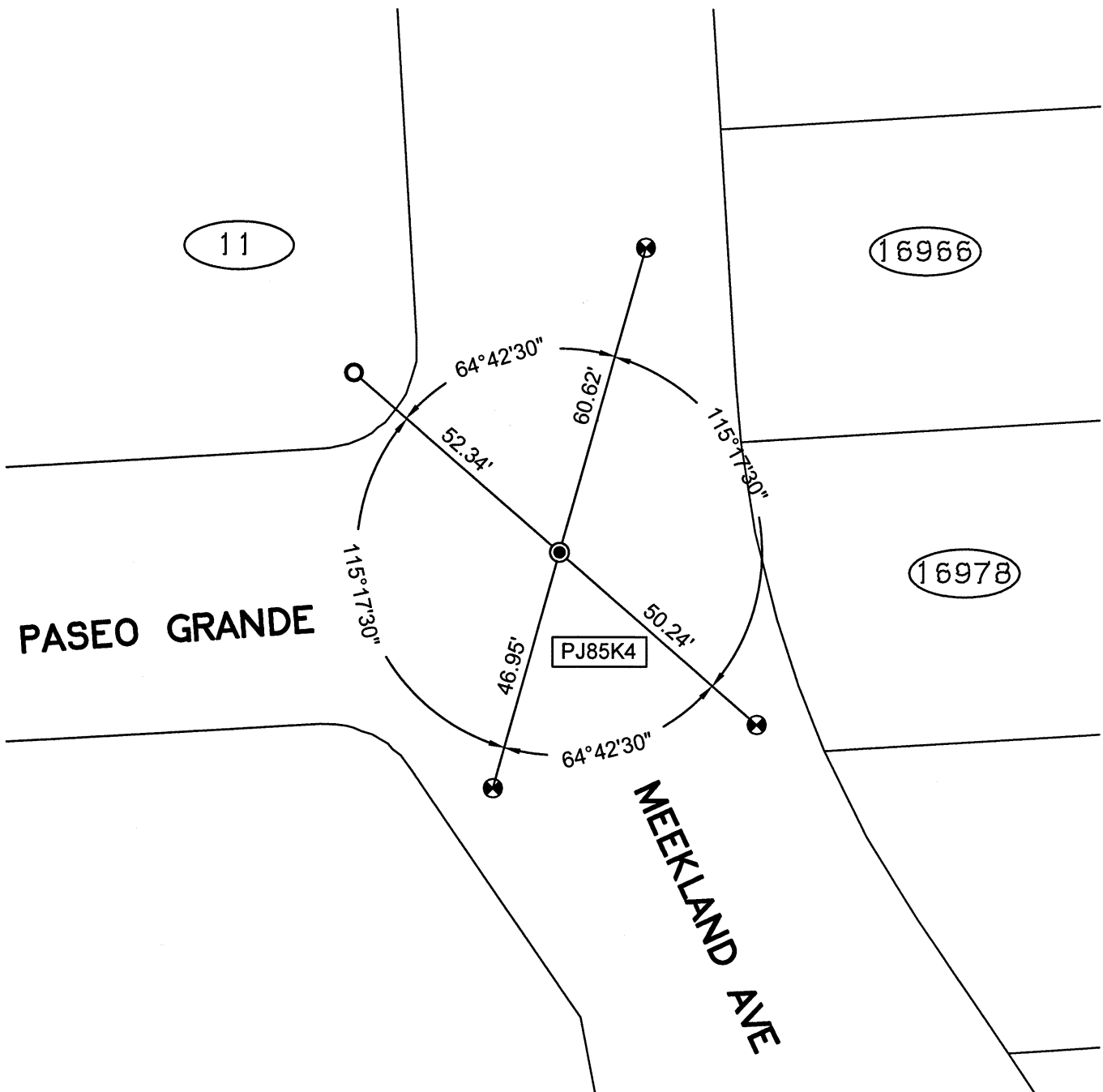
County Surveyor's Comment _____

SPEC-2303-PRE

SCALE: 1"=30'

LEGEND

- FOUND BRASS DISC WITH PUNCH IN MONUMENT WELL
- ⊗ SET CUT CROSS IN WALK
- ✕ SET CUT CROSS IN CURB
- ⊗ FOUND CROSS IN CURB
- SET REBAR & CAP STAMPED "CEI RP"
- AA##A# ALAMEDA COUNTY MONUMENT ID
- 19592 REFERENCE STREET ADDRESS



216129-Meekland-CR04