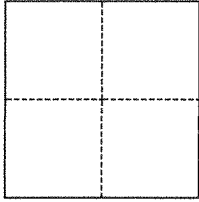


# CORNER RECORD

Agency Index BK144 PG 81Document Number CR 15075City of OAKLAND County of ALAMEDA, CaliforniaBrief Legal Description CITY SURVEY MONUMENT AT LOS ANGELES ST & ARLINGTON AVE**CORNER TYPE****COORDINATES (Optional)**

- ☐ Government Corner ☒ Control  
☐ Meander ☐ Property  
☐ Rancho ☐ Other

Date of Survey January 21, 2021

N. \_\_\_\_\_ E. \_\_\_\_\_

Elevation \_\_\_\_\_

Units ☐ Metric ☒ U.S. Survey Foot

Horizontal Datum \_\_\_\_\_

Zone \_\_\_\_\_ Epoch Date \_\_\_\_\_

Vertical Datum \_\_\_\_\_

☐ Complies with Public Resources Code §§8801-8819☐ Complies with Public Resources Code §§8890-8902

PLS Act Ref.:

☐ 8765(d)☒ 8771☐ 8773☐ Other:Corner/  
Monument:☒ Left as found☐ Established☐ Rebuilt☒ Pre-Construction☐ Found and tagged☐ Reestablished☒ Referenced☐ Post-Construction

Narrative of corner identified and monument as found, set, reset, replaced, or removed:

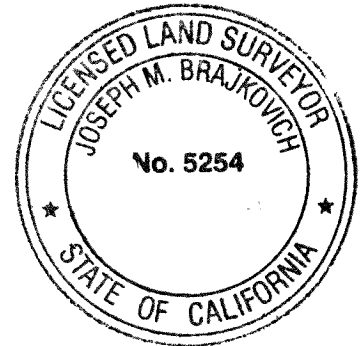
☒ See sheet #2 for description(s):**SURVEYOR'S STATEMENT**

This Corner Record was prepared by me or under my direction in conformance with

the Professional Land Surveyors' Act on

Signed

P.L.S. or R.C.E. No.

2-12-21  
5254**COUNTY SURVEYOR'S STATEMENT**

This Corner Record was received

and examined and filed

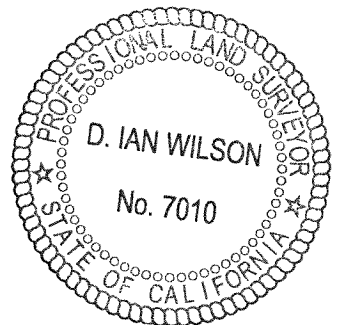
JAN 12 2022

Signed

P.L.S. or R.C.E. No.

7010Title ALAMEDA COUNTY SURVEYOR

County Surveyor's Comment

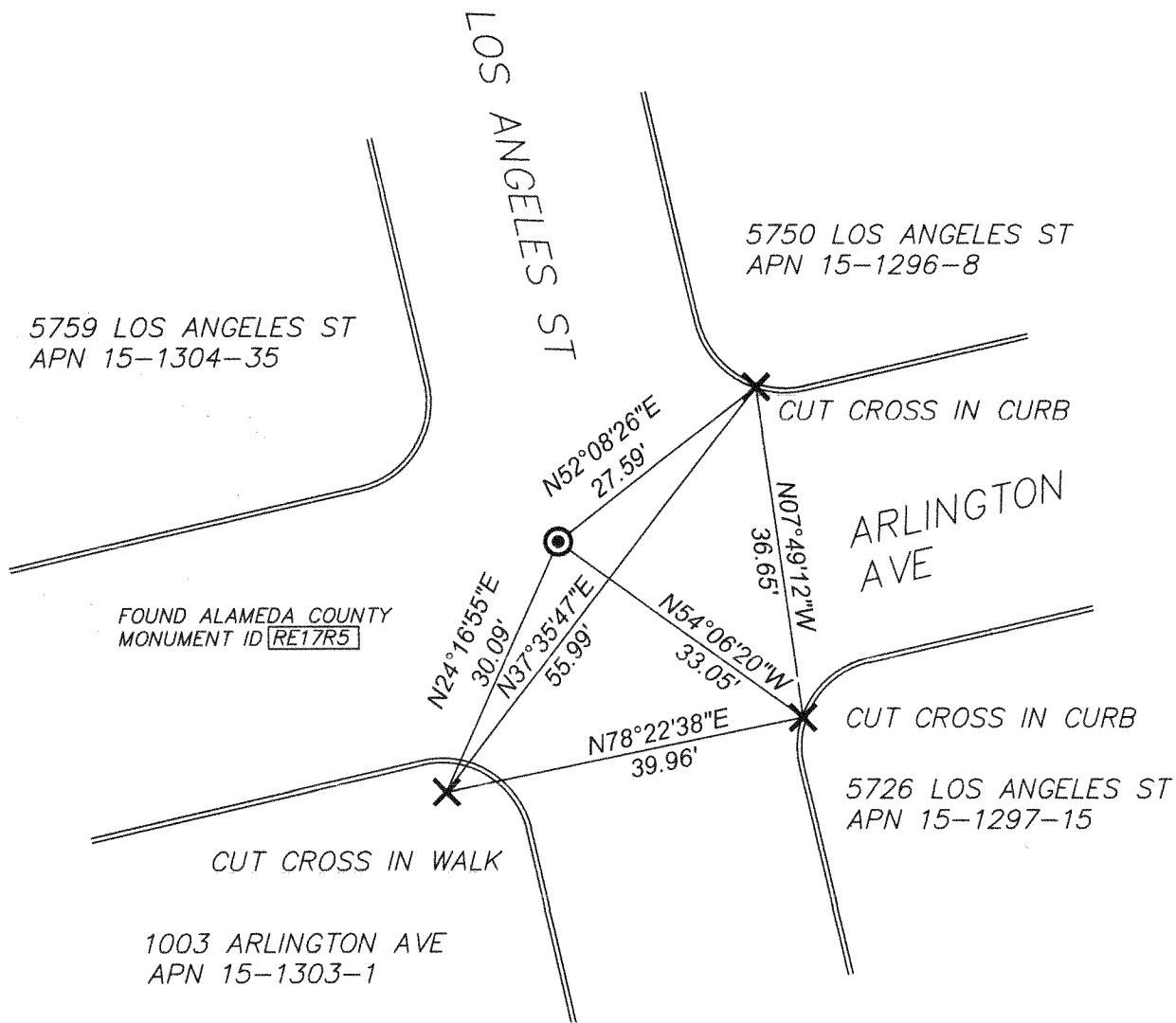


## LEGEND

- AA#### ALAMEDA COUNTY MONUMENT ID  
 ##### STREET ADDRESS  
 APN ASSESSOR'S PARCEL NUMBER  
 X CUT CROSS SET IN CURB  
 OR WALK AS DISPLAYED  
 ● FOUND SURVEY MONUMENT  
 (1/8" PIN IN DISC IN WELL)



SCALE: 1" = 20'



21001 SHEET L-22