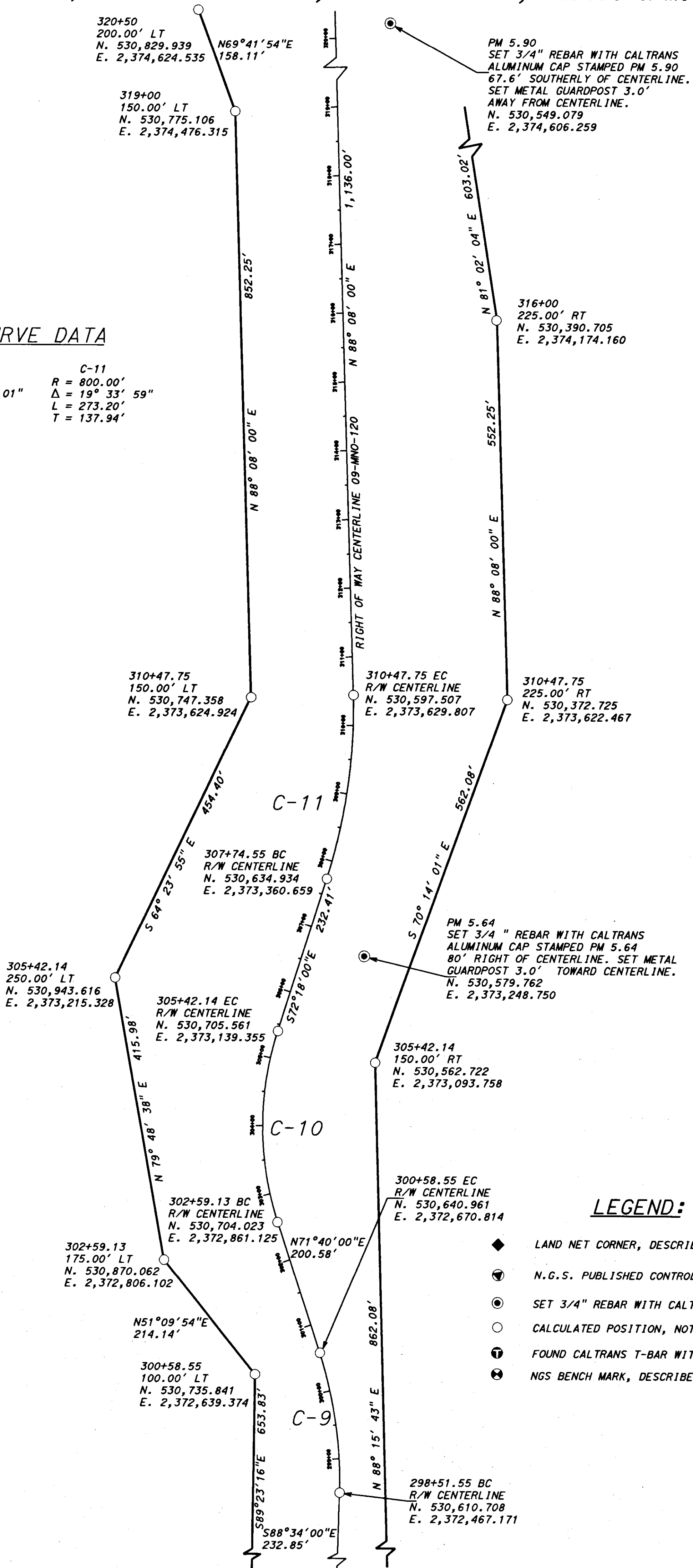


RECORD OF SURVEY NO. 34-82 SECTION 15, TOWNSHIP 1 NORTH, RANGE 25 EAST, M.D.B. & M.

SHEET 6 OF 22

CENTERLINE CURVE DATA

C-9	C-10	C-11
R = 600.00'	R = 450.00'	R = 800.00'
$\Delta = 19^{\circ} 46' 01''$	$\Delta = 36^{\circ} 02' 01''$	$\Delta = 19^{\circ} 33' 59''$
L = 207.00'	L = 283.01'	L = 273.20'
T = 104.54'	T = 146.36'	T = 137.94'



LEGEND:

- ◆ LAND NET CORNER, DESCRIBED AS NOTED
- N.G.S. PUBLISHED CONTROL POINT
- ⊙ SET 3/4" REBAR WITH CALTRANS ALUMINUM CAP
- CALCULATED POSITION, NOTHING FOUND OR SET
- ⊕ FOUND CALTRANS T-BAR WITH CAP
- ⊗ NGS BENCH MARK, DESCRIBED AS NOTED



1" = 100'

C.G.F. = 0.99952249

GRID COORDINATES AND BEARINGS
GROUND STATIONS AND DISTANCES