

Caja 2

34

Penderecki

Threnody
To the victims of Hiroshima
for 52 strings

Threnos
Den Opfern von Hiroshima
für 52 Saiteninstrumente

\$4.00

Cinta 29/
G

R 3/609

Belwin  **Mills** Publishing Corp. MELVILLE, N. Y. 11746

PRINTED IN U.S.A.

SB902

Abkürzungen und Symbole Abbreviations and symbols

Erhöhung um einen Viertelton sharpen a quarter-tone	†
Erhöhung um einen Dreiviertelton sharpen three quarter-tones	‡
Erniedrigung um einen Viertelton flatten a quarter-tone	♭
Erniedrigung um einen Dreiviertelton flatten three quarter-tones	♮
höchster Ton des Instrumentes (unbestimmte Tonhöhe) highest note of the instrument (no definite pitch)	↑
zwischen Steg und Saitenhalter spielen play between bridge and tailpiece	↗
Arpeggio zwischen Steg und Saitenhalter (4 Saiten) arpeggio on 4 strings behind the bridge	
auf dem Saitenhalter spielen (arco), Bogenstrich über den Saitenhalter (in einem Winkel von 90° zu dessen Längsachse) play on the tailpiece (arco) by bowing the tailpiece at an angle of 90° to its longer axis	↖
auf dem Steg spielen (arco), Bogenstrich über das Holz des Steges senkrecht zu dessen rechter Schmalseite play on the bridge by bowing the wood of the bridge at a right angle at its right side	⬆
Schlagzeugeffekt: mit dem Frosch oder mit der Fingerspitze auf die Decke klopfen Percussion effect: strike the upper sounding board of the violin with the nut or the finger-tips	f
mehrere unregelmäßige Bogenwechsel several irregular changes of bow	∩∪
molto vibrato	~~~~
sehr langsames Vibrato mit 1/4 Ton-Frequenzdifferenz durch Fingerverschiebung very slow vibrato with a 1/4 tone frequency difference produced by sliding the finger	~~~~
sehr schnelles, nicht rhythmisiertes Tremolo very rapid non rhythmized tremolo	Σ
ordinario	ord.
sul ponticello	s. p.
sul tasto	s. t.
col legno	c. l.
legno battuto	l. batt.

Krzysztof Penderecki
Threnos
Den Opfern von Hiroshima

A a

24 Violini
10 Violen
10 Violoncelli
8 Contrabbassi

15" 11"

24 Vn
10 Vl
10 Vc
8 Cb

4" 6" 13"

SB902

⑥

24Vn

1-6

7-12

13-18

19-24

*mf**mf**mf**mf*

10VI

1-5

6-10

pizz. *l.batt.* *arco**l.batt.* *pizz.* *arco**l.batt.* *arco* *pizz.**pizz.* *arco* *l.batt.* *arco*

10Vc

pizz. *arco* *l.batt.* *arco**simile**l.batt.* *arco* *pizz.**simile**l.batt.* *pizz.* *arco**simile**pizz.* *l.batt.* *arco**simile*

8Cb

1-4

5-8

*mf**mf*

15"

15"

24Vn

10Vi

10Vc

8Cb

1.batt. pizz. arco
simile

pizz. arco 1.batt. arco
simile

pizz. 1.batt. arco
simile

1.batt. arco pizz.
simile

1.batt. arco pizz.
simile

pizz. 1.batt. arco
simile

pizz. 1.batt. arco
simile

1.batt. pizz. arco
simile

15"

15"

10 **b**

24 Vn

1-12 *meta*
s.p.
ppp

1
(a)

12
(a)

con sord.
meta
13-24
ppp

13
(b-a)

24
(b-a)

10 VI

1-10 *tutti*
s.p.
pp

1
(a)

10
(a)

tutte
1-10
mf

1
(a)

10
(a)

10 Vc

1-8 *tutti*
ppp

1
(b-a)

8
(b-a)

15" 25" 20"

13

24Vn

13-24

senza sord.

ord.

1-12

15

PPP

1, 2...

12

10VI

1-10

s.p.

ord.

PPP

1, 2...

10

10Vc

1-10

con sord.

senza sord.

ord.

PPP

1, 2...

10

8Cb

1-8

ord.

PPP

1, 2...

8

15"

20"

10"

SB902

16

12Vn 1-12 *ff* *f* *s.p.* *gliss.* *pp*

12Vn 13-24 *ff* *f* *s.p.* *gliss.* *pp*

10VI 1-10 *ff* *f* *s.p.* *gliss.* *pp*

10Vc 1-10 *ff* *sub. pp* *gliss.*

8Cb 1-8 *ff* *ppp* *gliss.*

18'' 20''

12Vn

12Vn

10VI

10Vc

8Cb

(19)

12Vn 1-12

12Vn 13-24

10VI 1-10

10Vc 1-10

gliss.

fff

f

1, 2... 10

1, 2... 10

8Cb 1-8

gliss.

fff

f

1, 2... 8

1, 2... 8

15" 7" 5"

(20)

(23)

5Vc 1-5

Solo

s.vibr.

p

pp

pppp

5Vc 6-10

p

10" 7" 10" 5"

44

4Vn 13 14 15 16

3VI 1 2 3

I

3Vc 1 2 3

2Cb 1 2

4Vn 17 18 19

3VI 4 5 6

II

3Vc 4 5 6

2Cb 4

4Vn 21 22 23 24

3VI 7 8 9

3Vc 7 8 9

2Cb 5 6

15"

Handwritten notes on the left margin:

- CB1
- CB2
- VC3
- VC2
- VC1
- VI3
- VI2
- VI1
- II
- VN4
- VN3
- VN2
- VN1

Handwritten notes at the bottom:

(Cm 42) 526 EN REXON 20/12 II

26

4Vn

13

14

15

16

3VI

1

2

3

3Vc

1

2

3

2Cb

1

2

15"

con sord. s.p.

pp

c.l.

mp

pizz.

ff

senza sord.

arco sul G

pp

arco

ff

con sord.

f

s.p.

pp

pizz.

arco

s.p.

pp

arco

ff

s.p.

pp

1. batt.

sff

sul C

f

c.l.

mp

pizz.

ff

arco

s

ppp

sff

arco s.p.

f

c.l. sul C

6

mf

32

4Vn

13

14

15

16

3VI

1

2

3

3Vc

1

2

3

2Cb

1

2

15"

s.p.

mp

pp

s.p.

ppp

senza sord. s.p.

ppp

s.p.

ppp

s.p.

ppp

s.p.

ppp

senza sord. s.p.

ppp

s.p.

ppp

c.l. ord.

p

c.l.

f

c.l.

f

c.l.

f

ord. c.l.

f

c.l.

f

pizz.

ff

sul D

6

pp

mp

c.l.

f

7-11

50

C62
C61
Vc3
Vc2
Vc1
Vl3
Vl3
Vl1
Vl4
Vh3
Vh2
Vh1

4Vn
3VI
3Vc
2Cb

4Vn
3VI
3Vc
2Cb

4Vn
3VI
3Vc
2Cb

15"

56 arco

4Vn

3VI

3Vc

2Cb

I

ff sempre

4Vn

3VI

3Vc

2Cb

II

4Vn

3VI

3Vc

2Cb

III

4Vn

3VI

3Vc

2Cb

10''

ff sempre

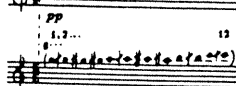
62

con sord.
s.p.
8...

63

12Vn

1-12



mf

4Vn 13-16

I 3VI 1-3

3Vc 1-3

4Vn 17-24

II 3VI 4-6

3Vc 4-6

4Vn 21-24

III 3VI 7-9

3Vc 7-9

10Vc

ENTRADA
ABREGADA

8Cb

1

2

3

4

5

6

7

8

5"

5"

SB902

64 65 66

12Vn 1-12 *ff* *senza sord.* *c.l.* *sub pp* *s.p.*

12Vn 13-24 *s.p.* *13, 14...* *24*

10VI 1-10 *ff* *s.p.* *1, 2...* *10* *sub. p*

10Vc 1-10 *con sord.* *1-10* *1, 2...* *10*

8Cb 1-8 *c.l.* *1-8* *1, 1...* *8*

4Cb 6-8 *10"* *6"* *10"*

12Vn¹⁻¹² 67 68 69
 senza trem. 8-----
 sub pp
 12

12Vn 13-24
 pp
 24

10Vl 1-10
 senza trem. s.p.
 p
 1, 2... 10

10Vc 1-10
 sub p
 pp
 1, 2... 10

8Cb 1-8
 senza trem.
 sub p
 arco s.p.
 mf
 sub pp
 6" 8" 10"

70
 s.p.
 nv
 tutti archi
 ord. s.t.
 fff pppp
 30"

24Vn 1-24
 1, 2... 24

10Vl 1-10
 1, 2... 10

10Vc 1-10
 1, 2... 10

8Cb 1-8
 1, 2... 8