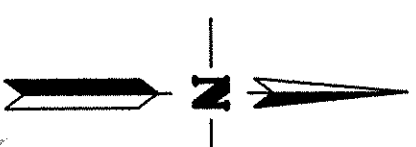
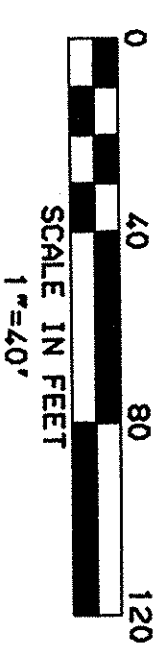
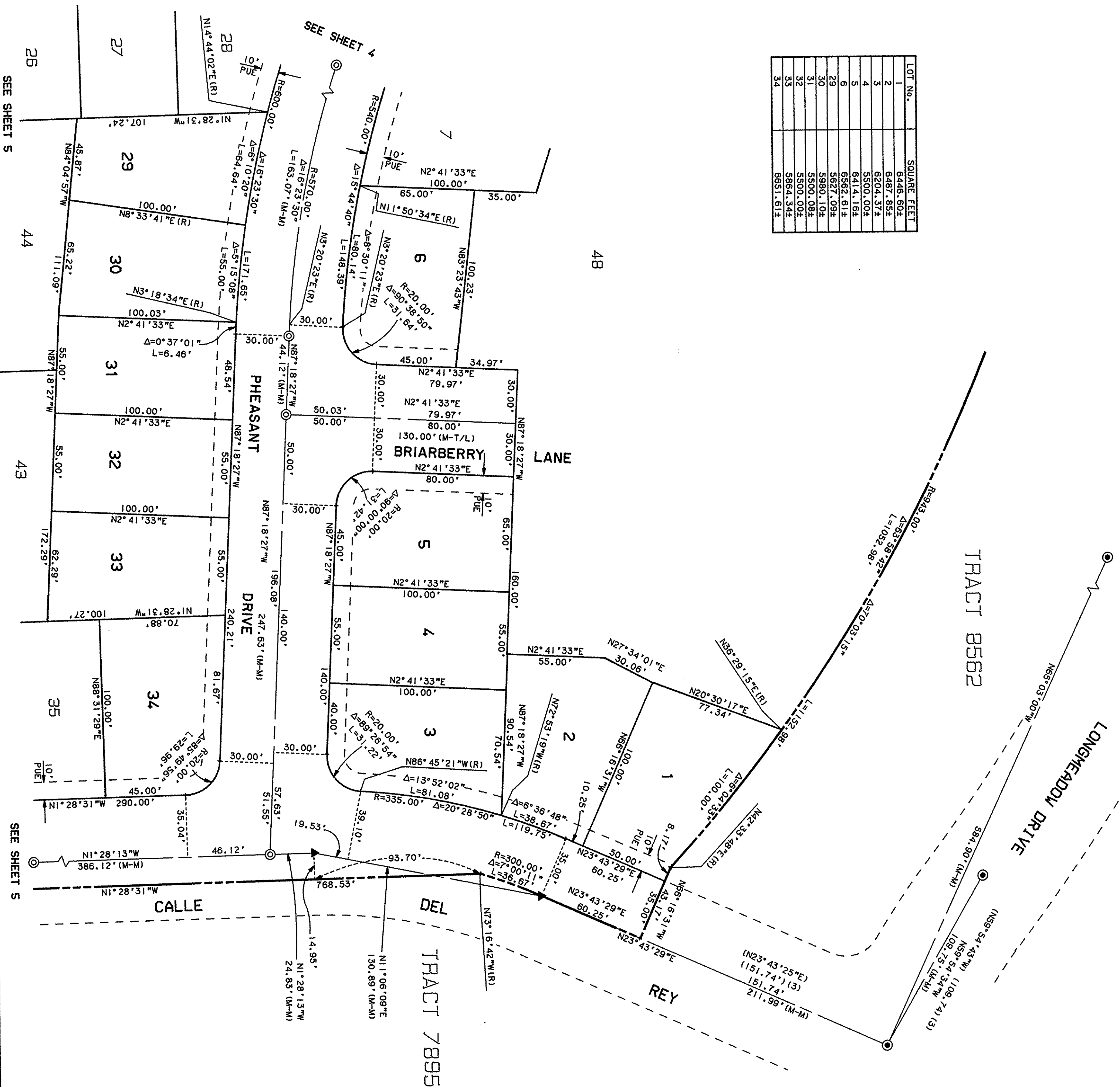


LOT No.	SQUARE FEET
1	6446.60±
2	6487.85±
3	6204.37±
4	5500.00±
5	6414.16±
6	6562.61±
29	5627.09±
30	5980.10±
31	5500.08±
32	5500.00±
33	5864.34±
34	6651.61±



NOTE:
ALL DISTANCES AND DIMENSIONS ARE GIVEN IN FEET AND DECIMALS THEREOF. THE DISTINCTIVE BORDERLINE INDICATES THE BOUNDARY OF LAND SUBDIVIDED BY THIS MAP.

BASIS OF BEARINGS
THE LINE BETWEEN FOUND MONUMENTS ALONG LONGMEADOW DRIVE TAKEN AS N89°42'35"W AS SHOWN ON TRACT 8024 FILED AUGUST 4, 1987, IN BOOK 576 OF MAPS PAGES 37-39, OFFICIAL RECORDS OF SANTA CLARA COUNTY

LEGEND

- TRACT BOUNDARY
- LOT LINE
- MONUMENT LINE
- TIE AT RIGHT ANGLE TO MONUMENT LINE
- UNLESS OTHERWISE NOTED
- FOUND STANDARD CITY MONUMENT TO BE SET
- FOUND STANDARD CITY MONUMENT
- FOUND PIPE AS NOTED
- FOUND STANDARD CITY MONUMENT (NOT OF RECORD)
- MONUMENT TO MONUMENT
- MONUMENT TO TRACT LINE
- (M-T/L)
- (M-M)
- (R)
- ()
- PUE
- TREE PLANTING EASEMENT

TRACT 8627 HILLCREST II

A PORTION OF THE SOLIS RANCHO,
LYING WITHIN THE CITY OF GILROY,
SANTA CLARA COUNTY,
STATE OF CALIFORNIA

GREINER, INC.
MILPITAS, CALIFORNIA