

1,609.

94

Lake Mary TractNo. of Lots 31 Mapped 1921, 1923, 1930Water System Installed By \* Crystal Craig Water & DevelopmentRoad Built By County and PermitteesElectrical Service Available Telephone AvailableAccess Lots 14A thru 36 on dirt road short distance from county paved road.All others just off of county road.Lots Front On Lake MaryTerrain In Subdivision Various-from steep sidehill to sloping sidehill facing Lake Mary. Tree growth and ground cover are moderate to heavy. The elevation is approximately 8,500'.

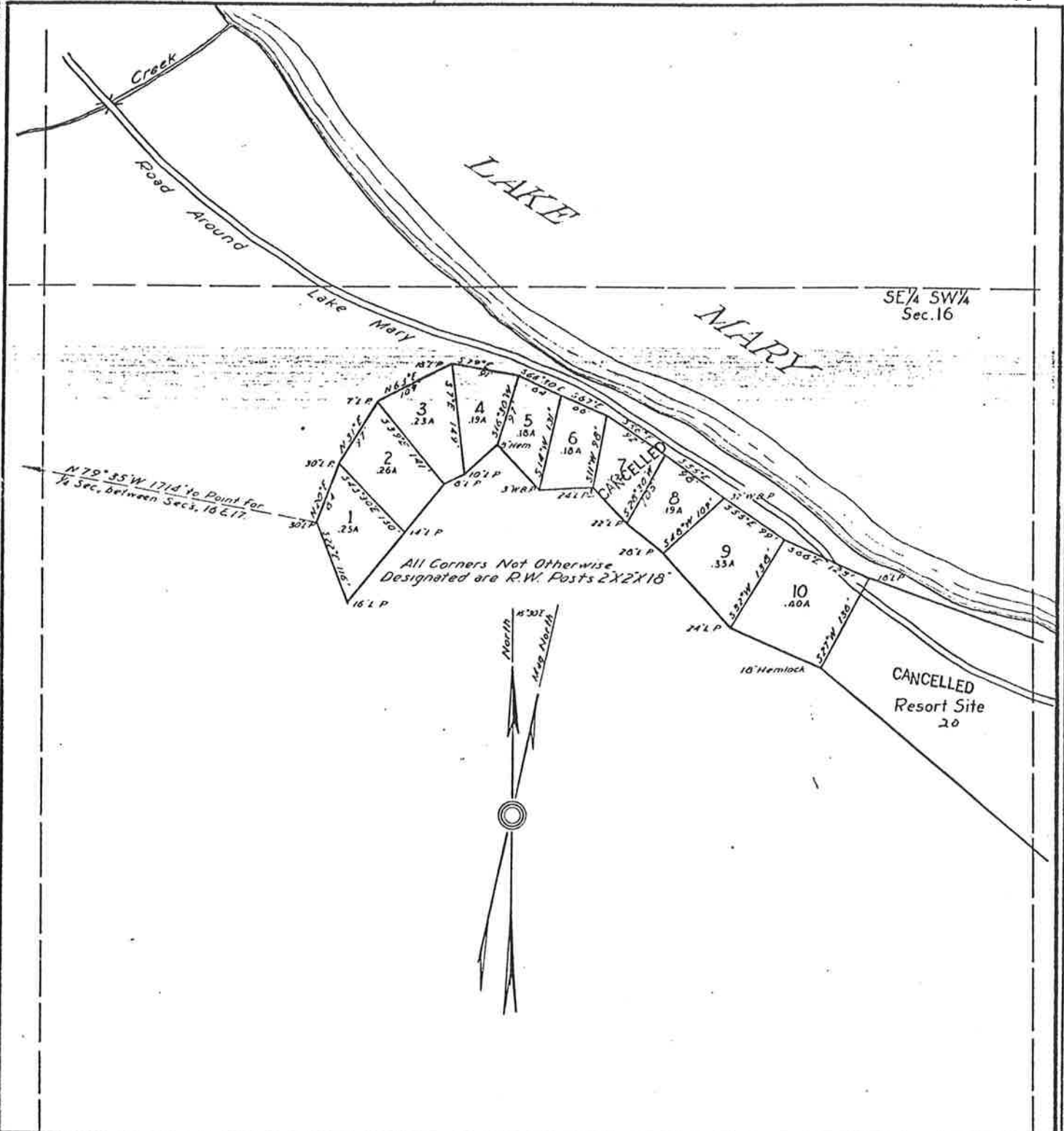
Comments Sewer system installed by Permittees in about 1976. \* Water supply from cold water creek, with holding tank and pond in canyon. Annual cost of \$10.00 per lot plus a special assessment in 1973 of \$200± for rehabilitation of water system. Sewer cost ran \$5592 per lot. To adjust the original sewer cost to current costs as of November 1, 1977, we could assume an 8.5% cost increase less a 3% depreciation for a net increase over cost of 5.5%. Updated costs would therefore be \$5,900.

U. S. DEPARTMENT OF AGRICULTURE  
FOREST SERVICE  
INYO NATIONAL FOREST  
MAMMOTH RECREATION AREA  
**LAKE MARY TRACT**  
SHEET 1  
Sec. 16 T. 4 S., R. 27 E. M. D. M.  
CALIFORNIA

L-Uses

Transit Survey (Lots 1-2-3-10 & Resort Site) by W. H. Friedlauff, Aug. 1921  
Compass Survey (Lots 4 to 9 & 11 to 26) by H. H. Simpson, June 1923

Mag. Decl. 16°30' E  
Scale 1"=100'



Approved by J. F. 12-7-31

U.S. DEPARTMENT OF AGRICULTURE  
FOREST SERVICE  
INYO NATIONAL FOREST  
MAMMOTH RECREATION AREA  
LAKE MARY TRACT

SHEET 2

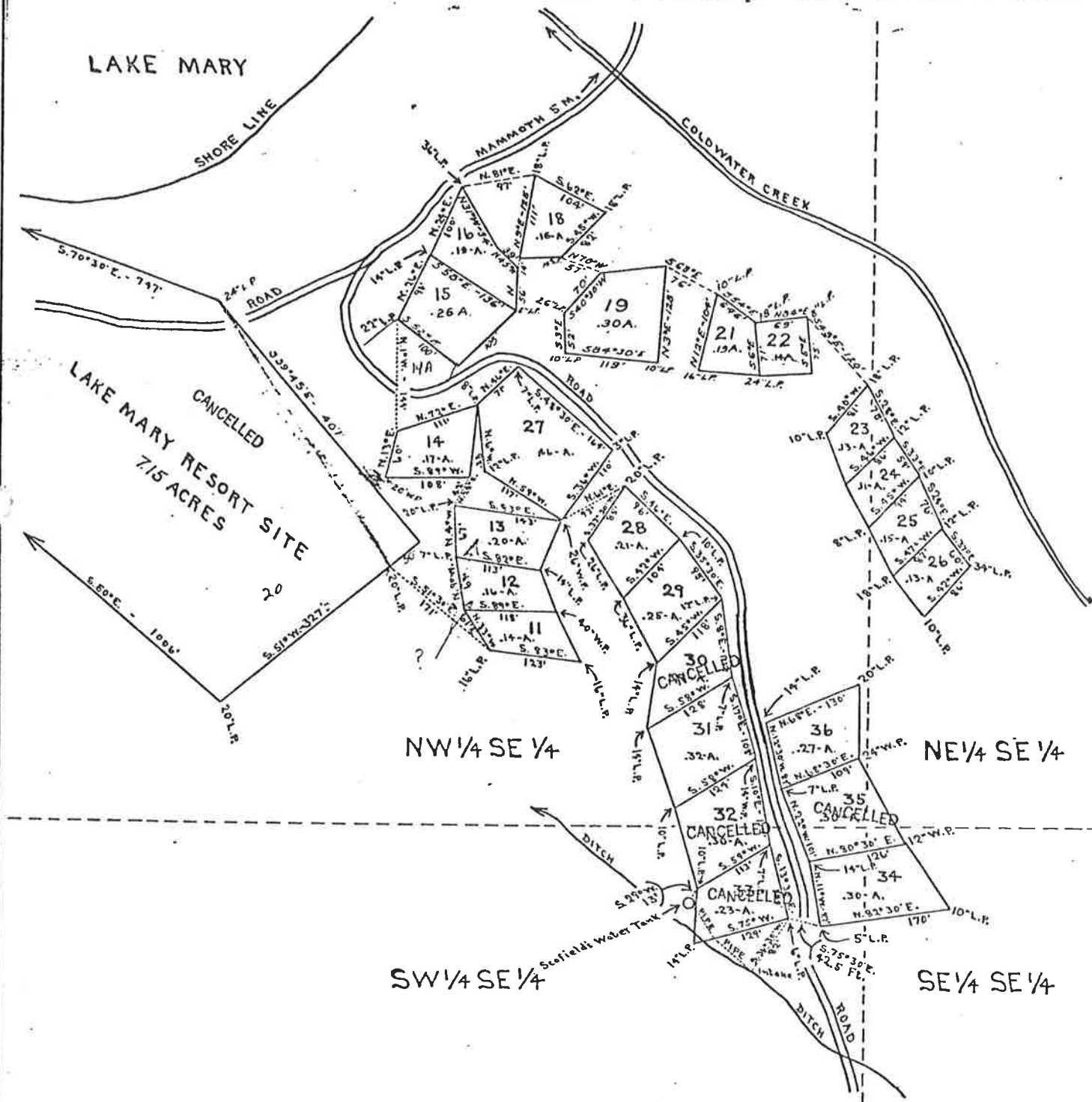
Sec. 16, T. 4 S., R. 27 E., M. D. M  
CALIFORNIA.

Uses

Compass Survey, Lots 4 to 9, and 11 to 26, By H. H. Simpson, June, 1923.  
Compass Survey, Lots 27 to 36, Simpson and Robinson, Sep. 1930.

Mag. Decl. = 17° E.

Scale 1 inch = 100 feet



Corr. 11-20-40 G.J.