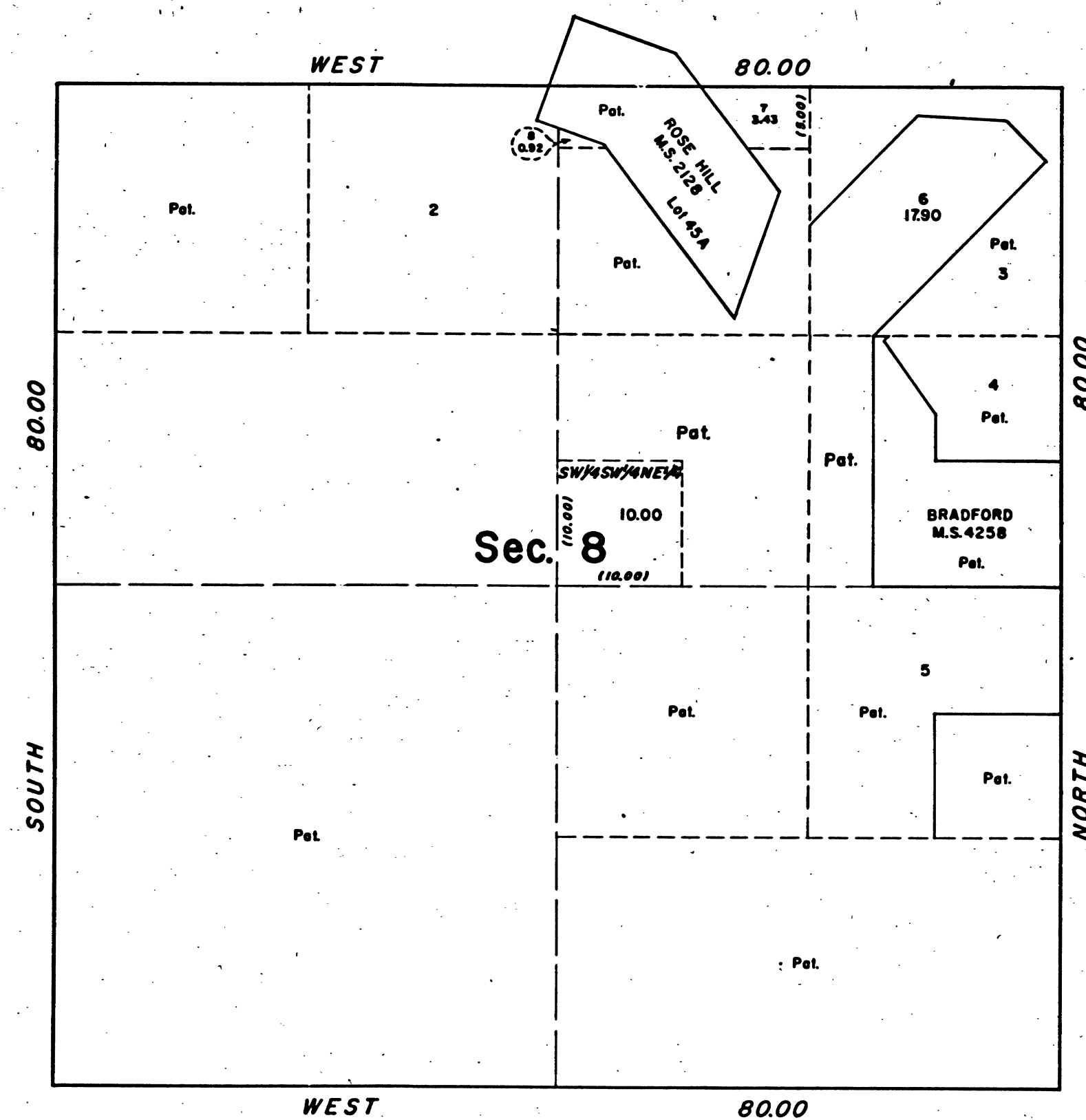


TOWNSHIP 4 NORTH, RANGE 13 EAST, OF THE MOUNT DIABLO MERIDIAN, CALIFORNIA.
SUPPLEMENTAL PLAT



This plat, showing amended lottings in section 8, Township 4 North, Range 13 East, Mount Diablo Meridian, California, is based upon the plats approved August 16, 1871, August 21, 1883, October 31, 1887, January 3, 1905; mineral plats approved August 21, 1883 and September 10, 1904.

UNITED STATES DEPARTMENT OF THE INTERIOR
BUREAU OF LAND MANAGEMENT
Washington, D. C. April 20, 1959

This plat, showing amended lottings, is based upon the official records, and having been correctly prepared in accordance with the regulations, is hereby accepted.

For the Director

Earl G. Harrington
Cadastral Engineering Staff Officer

CHAINS

CHAINS
10 20 40 60 80 100 120

4 1345-C

T. 4 N., R. 13 E. M.D.M.

BLM 188