

UNCLASSIFIED

~~RESTRICTED~~

SUBMARINE SSR 481

Classification (canceled/changed) by *0464 6/8/77 J. Stanley*

BOOKLET OF GENERAL PLANS

CORRECTED TO SUIT SHIP		
PLACE	DATE	PLANNING OFFICER
NAVAL SHIPYD, PORTSMOUTH, NH	1 AUGUST 1950	<i>[Signature]</i>
NAVAL SHIPYD, PORTSMOUTH, NH	22 NOV 1949	
NAVAL SHIPYD, PORTSMOUTH, NH	8 AUGUST 1950	<i>[Signature]</i>

PLATE NO. 1	TITLE COVER
PLATE NO. 2	GENERAL DIMENSIONS
PLATE NO. 3	OUTBOARD PROFILE
PLATE NO. 4	INBOARD PROFILE
PLATE NO. 5	MAIN DECK
PLATE NO. 6	PLATFORM DECK
PLATE NO. 7	HOLD
PLATE NO. 8	TYPICAL SECTIONS
PLATE NO. 9	TYPICAL SECTIONS

NAVAL SHIPYARD, PORTSMOUTH, N. H.

DRAWN BY COLLINS (C.D.)

CHECKED BY E. B. WOODS

UNIT HEAD E. B. WOODS (ACTING)

GROUP HEAD *[Signature]*

SECTION HEAD *[Signature]*

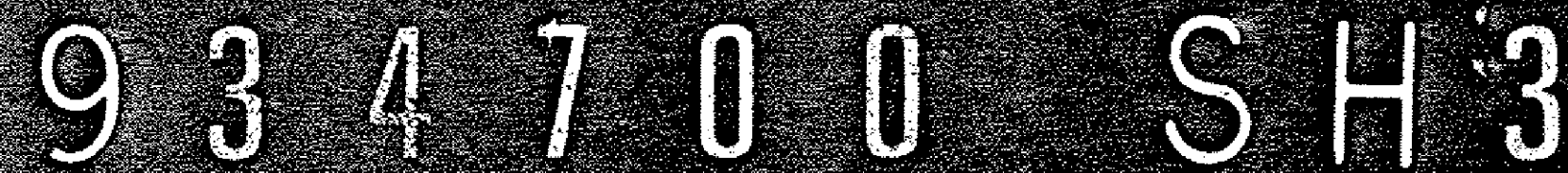
14 December 1948
HEAD ENGINEER

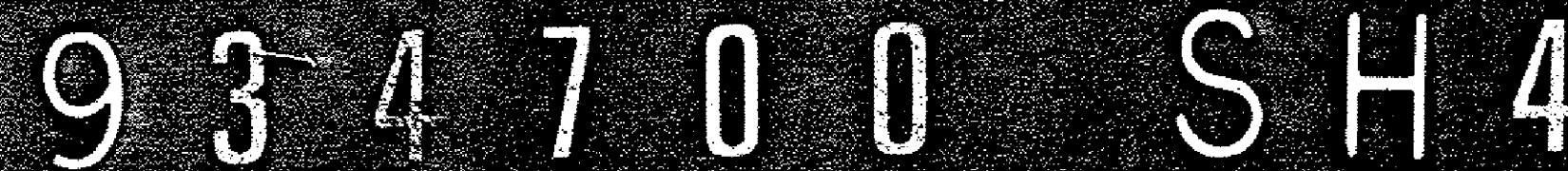
TECHNICAL OFFICER

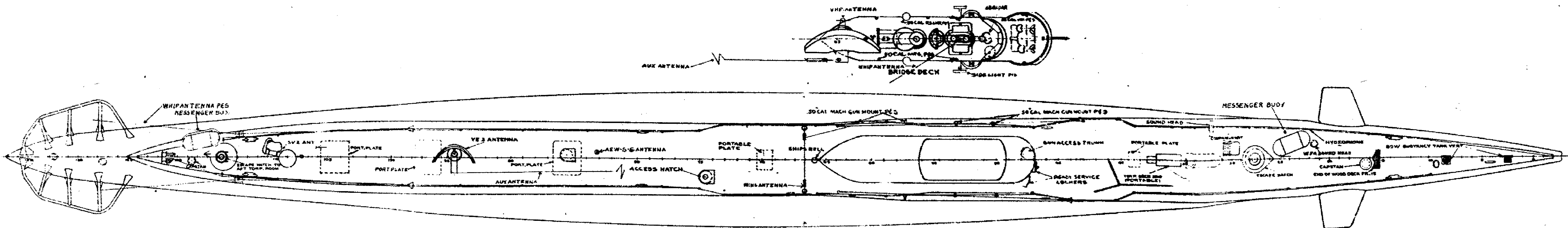
PLANNING OFFICER

BU. NO. SSR 481 - 50103-934700

934700 SH 1

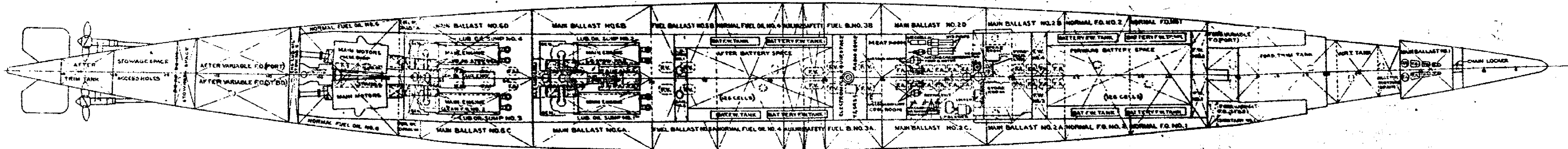






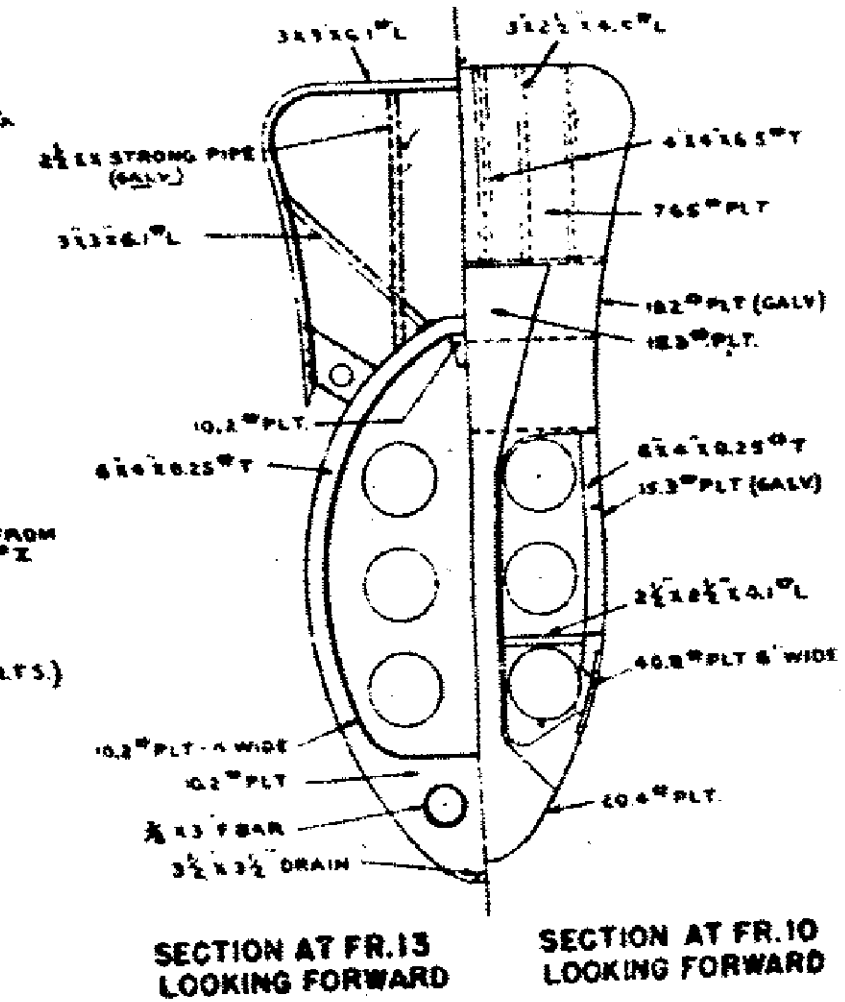
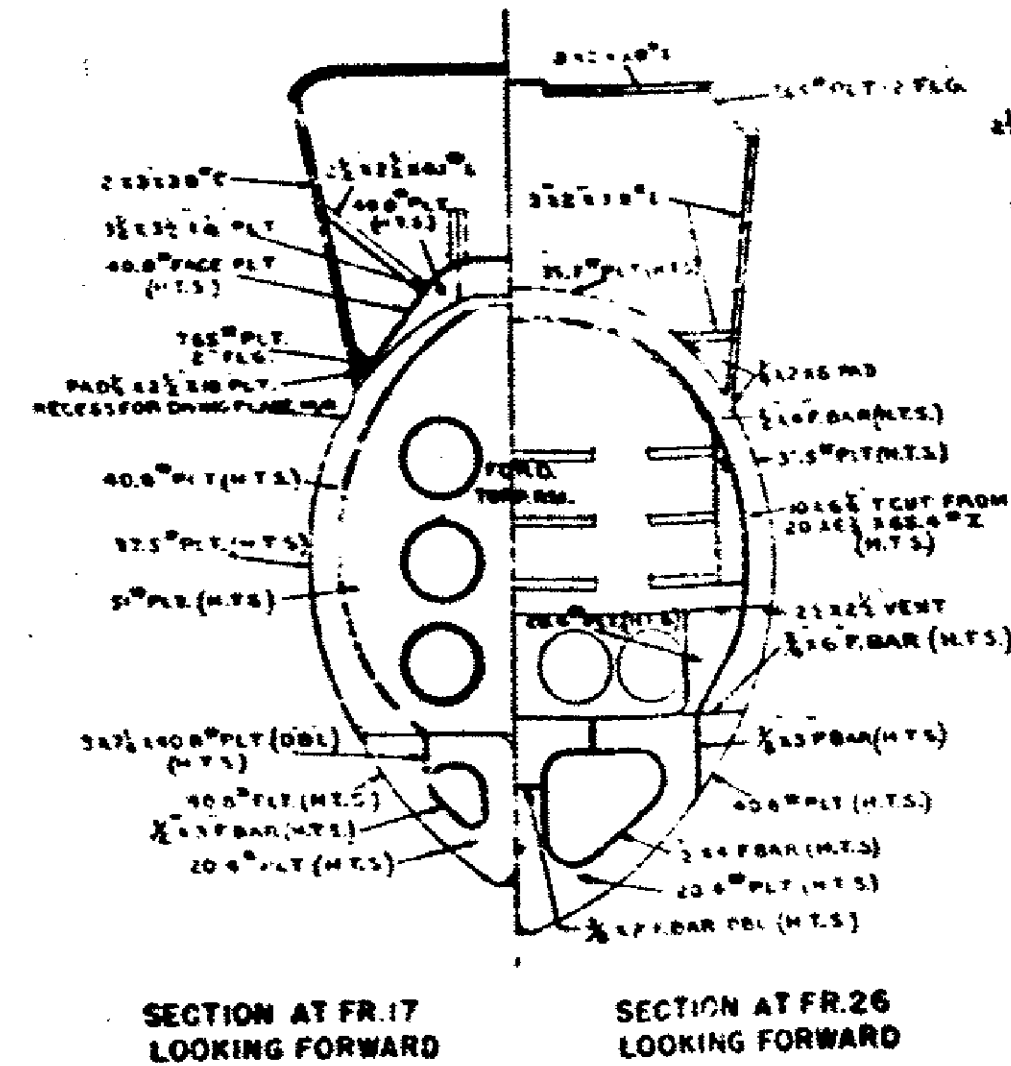
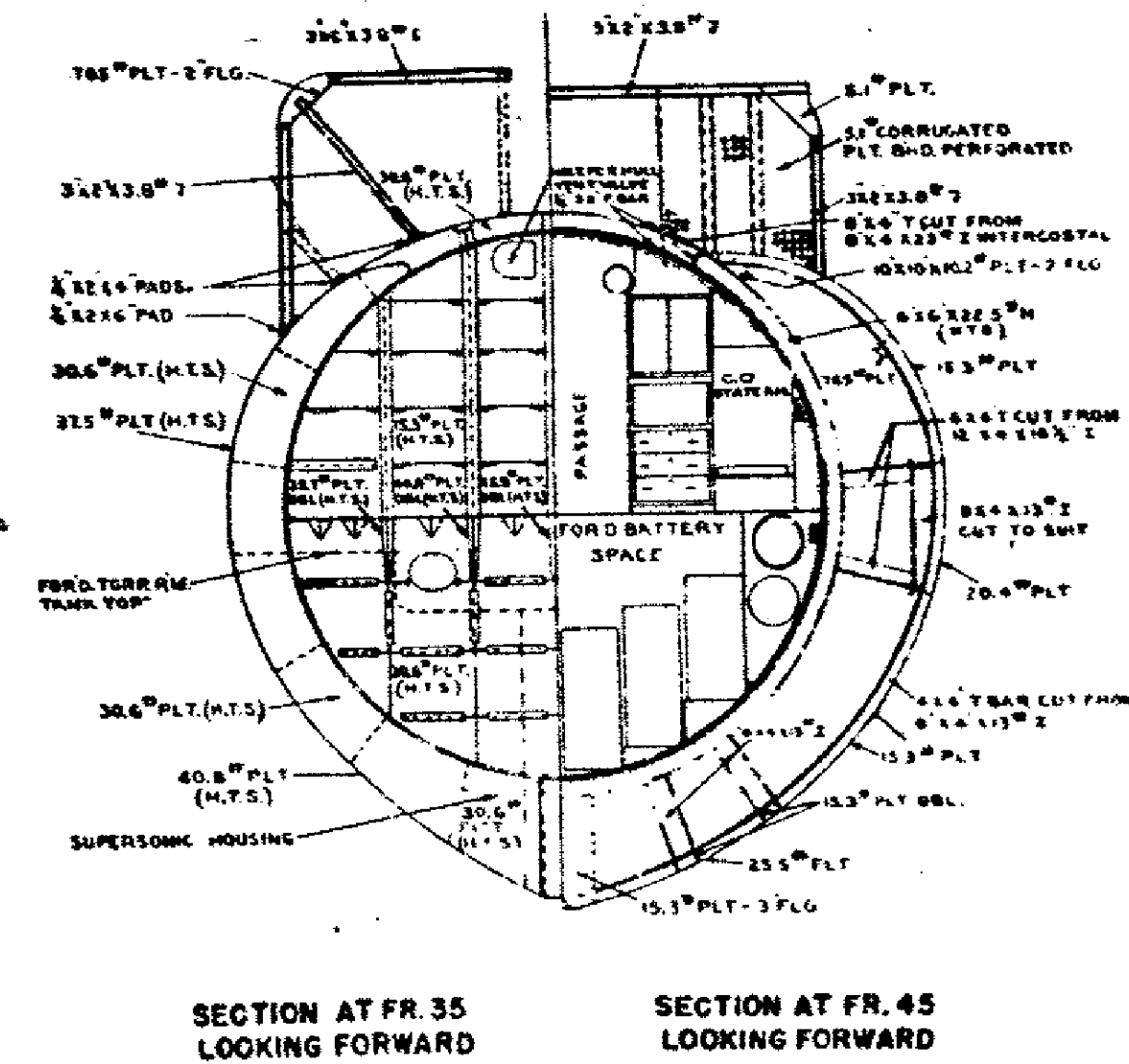
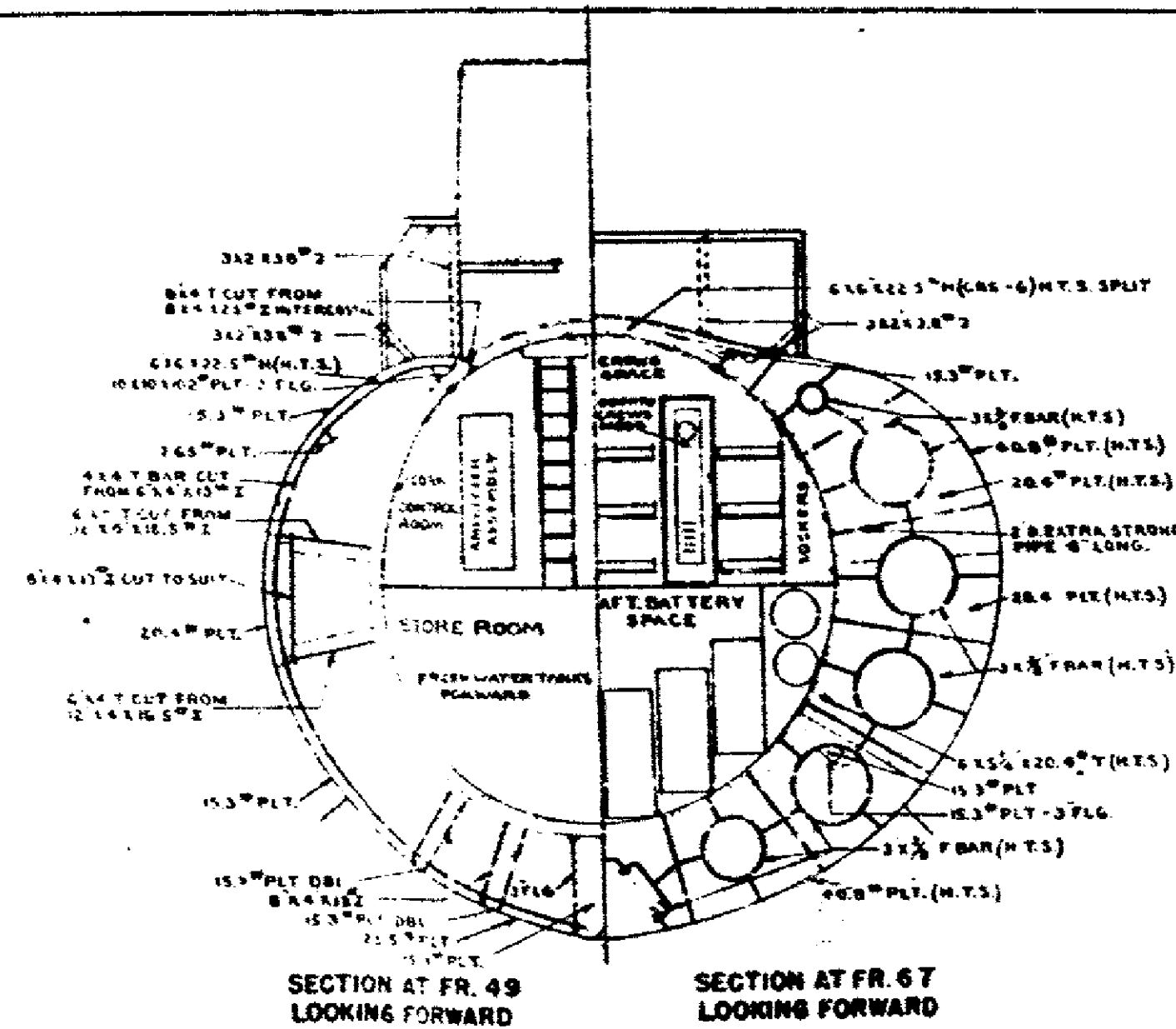
SUBMARINE SSR 481
 MAIN DECK
 SCALE 1/8" = 1' FOOT PLATE NO. 8
 BU. NO. SSR 481-S003-93-47C0

934700 SH5



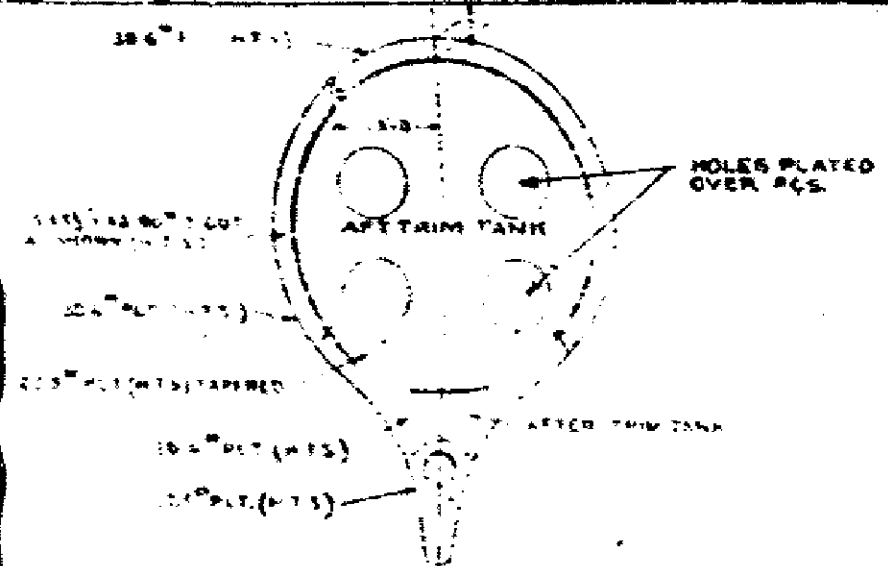
SUBMARINE SSR 481
HOLD
SCALE 1/8" = 1' FOOT PLATE NO. 7
BU NO. SSR 481 SW 103-93470

934700 SH7

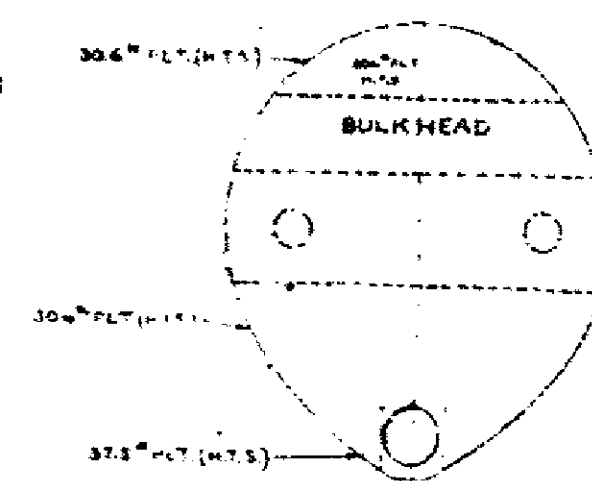


SUBMARINE SSR 481
TYPICAL SECTIONS
SCALE 1/4" = 1' FOOT PLATE NO. 8
BUNG. SSR 481 - 50103-934700

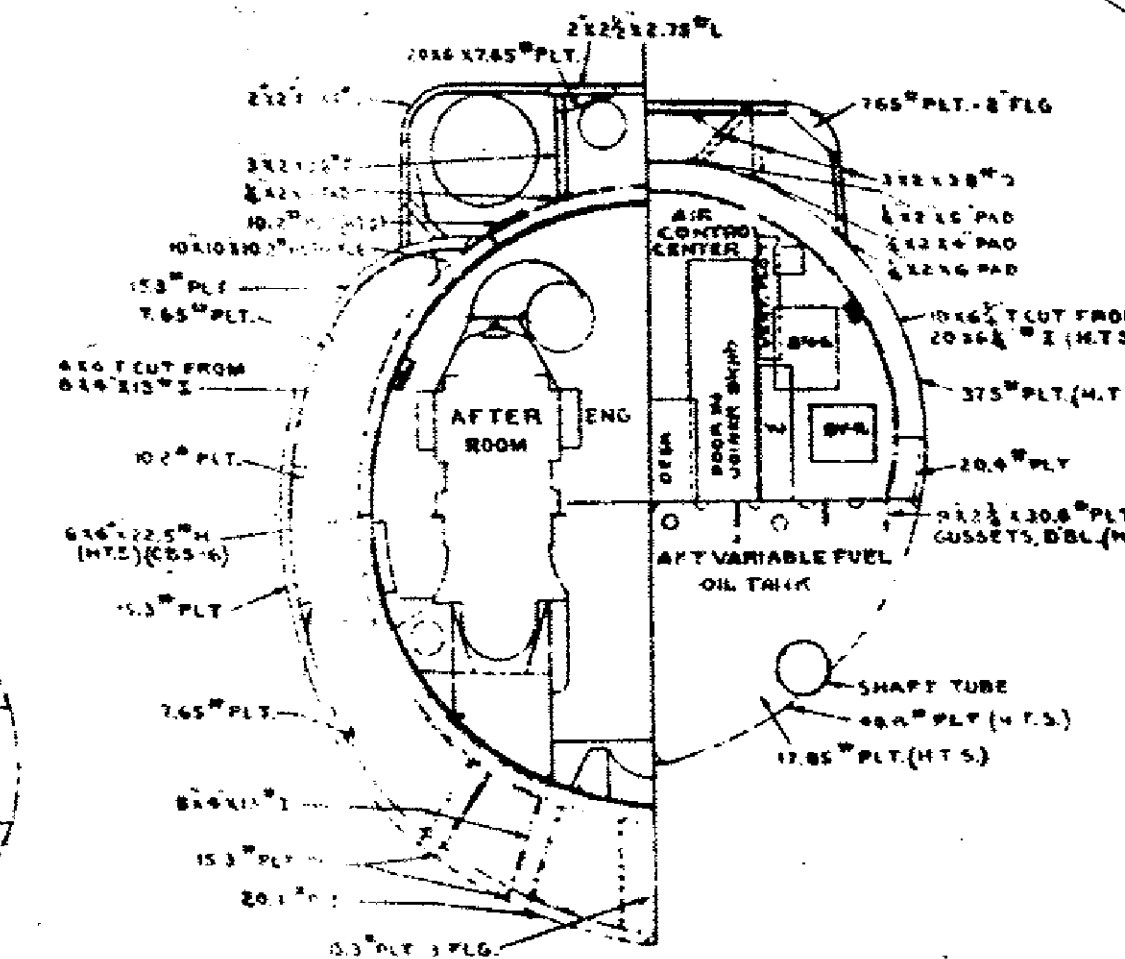
9 3 4 7 0 0 S H 8



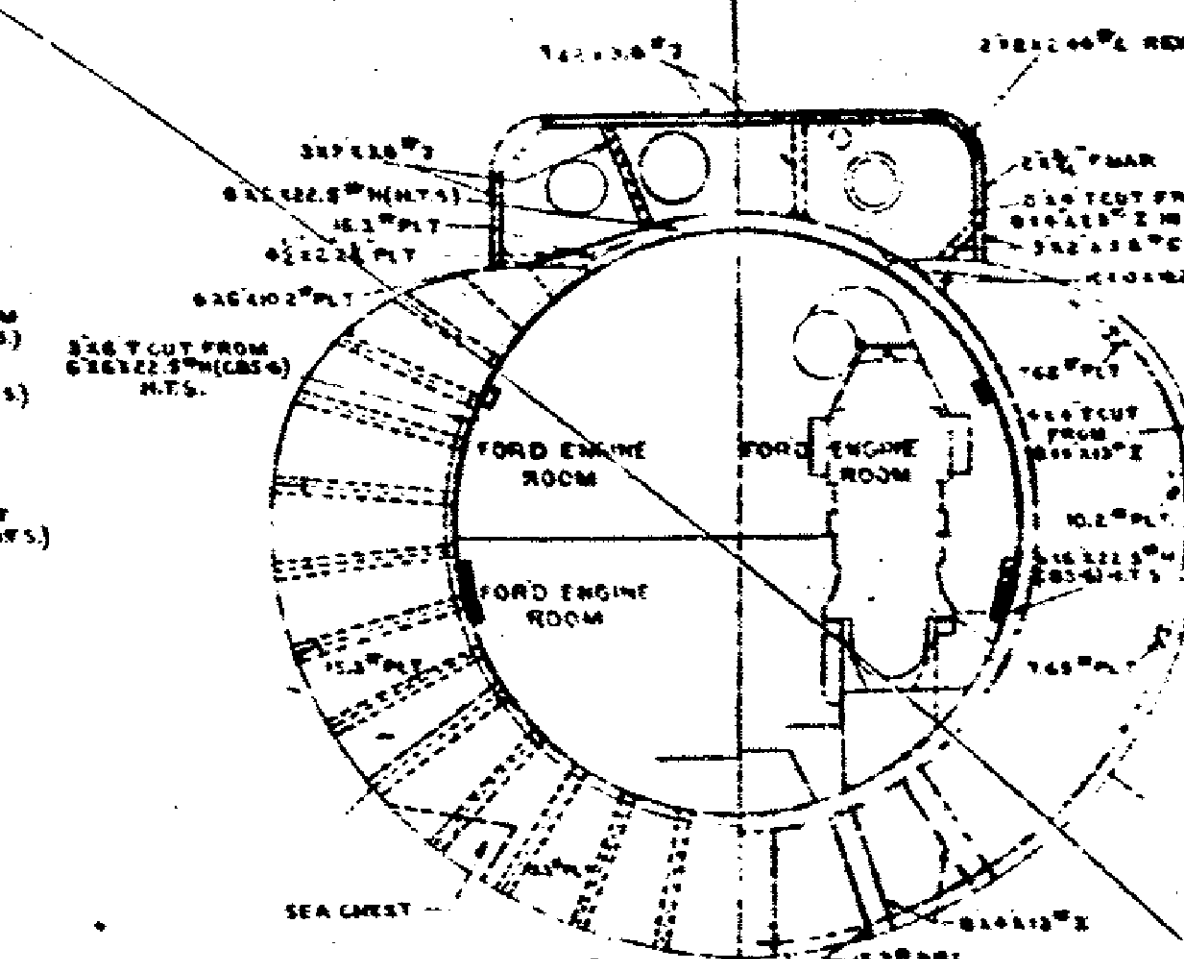
SECTION AT FR.128
LOOKING AFT



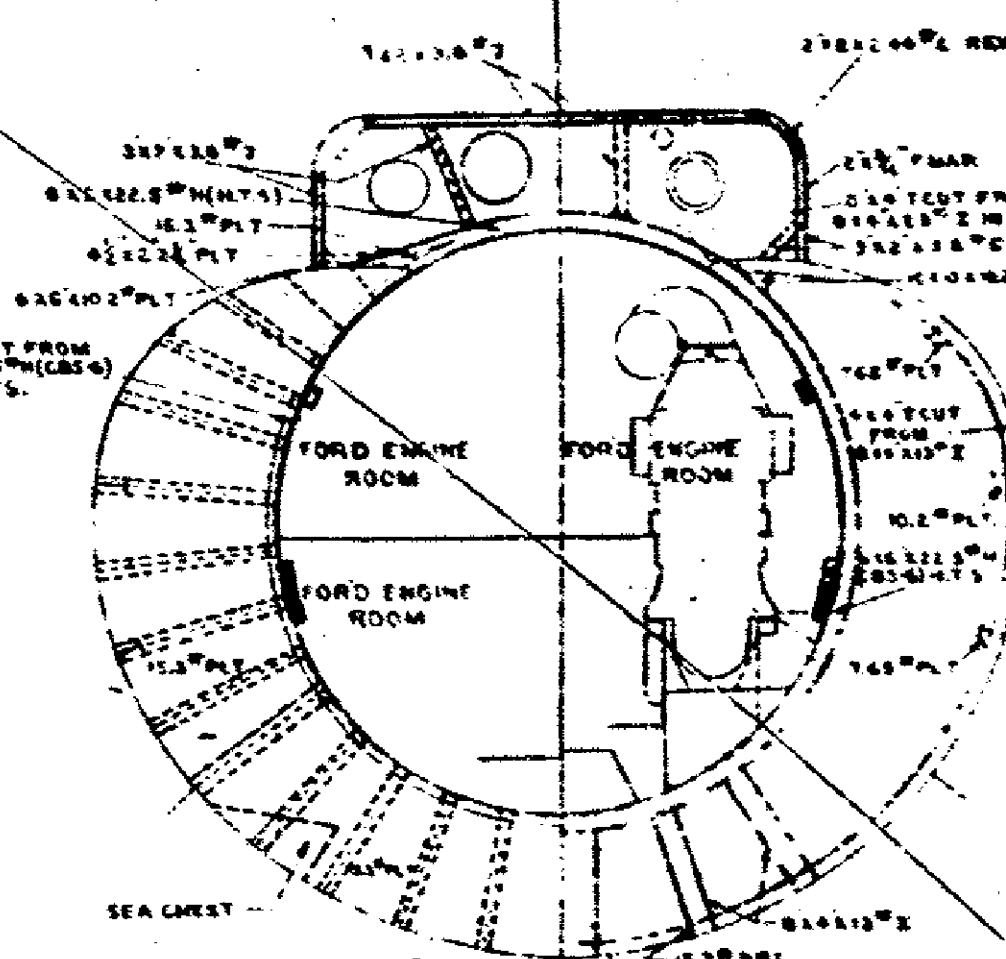
SECTION AT FR.125
LOOKING AFT



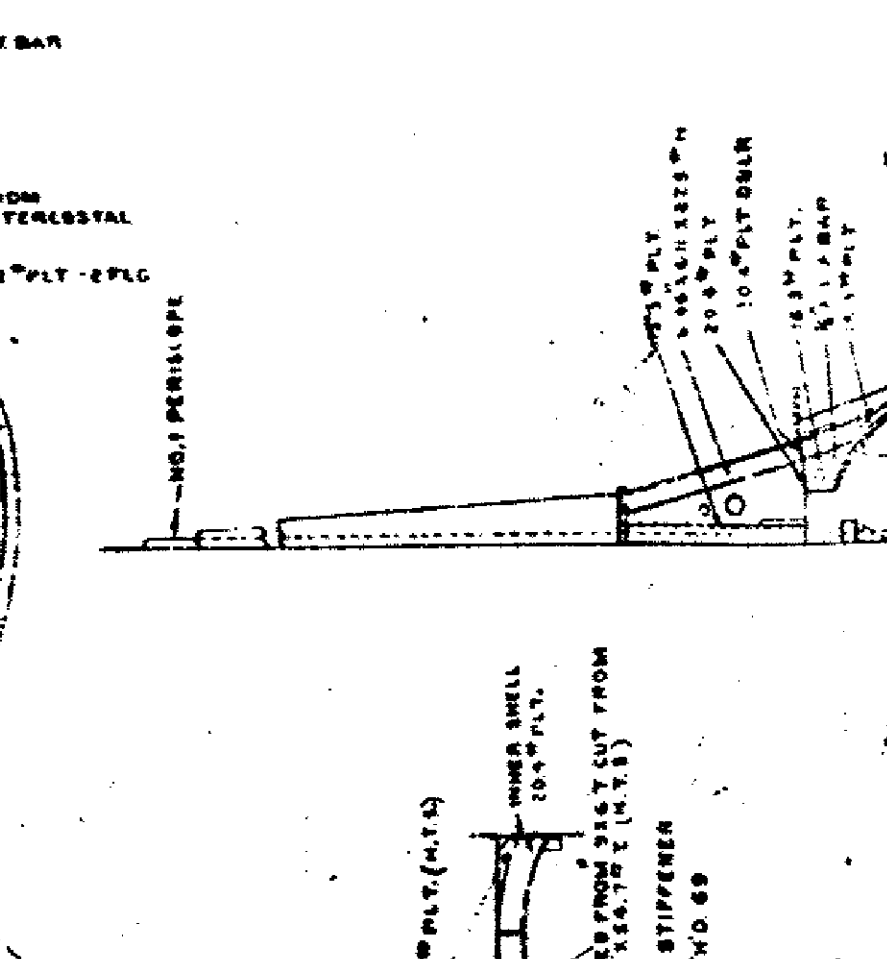
SECTION AT FR.95
LOOKING AFT



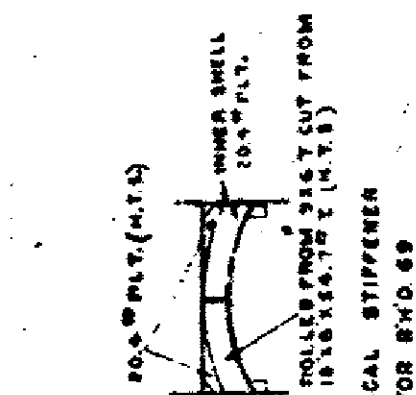
SECTION AT FR.113
LOOKING AFT



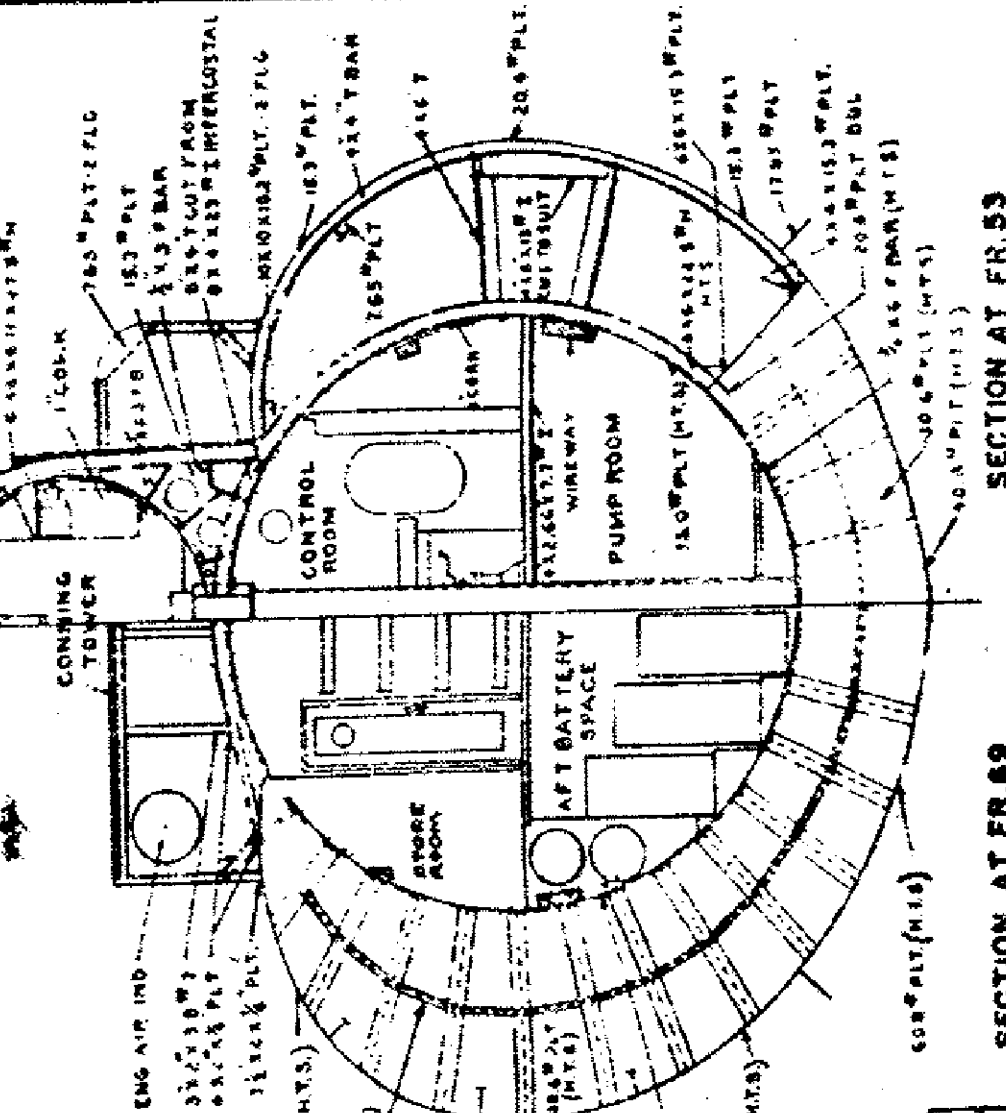
SECTION AT FR.79
LOOKING AFT



SECTION AT FR.81
LOOKING AFT



TYPICAL STIFFENER
FOR BND 69



SECTION AT FR.69
LOOKING AFT

SUBMARINE SSR 481
TYPICAL SECTIONS
SCALE 1/4" = 1' 00" PLATE NO 9
BULO.SSR 481-50103-934700

934700 SH9