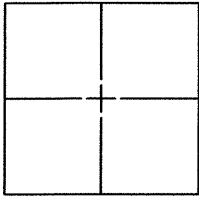


CORNER RECORDDocument Number CR 6259City of ALBANYCounty of ALAMEDA, CaliforniaBrief Legal Description CITY OF ALBANY MONUMENT NO. 3669 AT THE NORTH EAST CORNER OF PIERCE STREET AND BUCHANAN STREET.**CORNER TYPE**

Government Corner ☐ Control ☒
 Meander ☐ Property ☐
 Rancho ☐ Other ☐
 Date of Survey 4/25/2013

COORDINATES (Optional)

N. _____
 E. _____
 Zone _____ NAD27 ☐ NAD83 ☐
 NAD83 Epoch _____
 Elev. _____
 Vet. Datum: NGVD29 ☐ NAVD88 ☐
 Meas. Units: Metric ☐ Imperial ☐

Corner — Left as found ☐ Found and tagged ☐ Established ☐ Reestablished ☒ Rebuilt ☐

Identification and type of corner found: Evidence used to identify or procedure used to establish or reestablish the corner:

THIS CORNER RECORD IS BEING FILED PURSUANT TO SECTION 8771.(b) OF THE CALIFORNIA BUSINESS AND PROFESSIONS CODE AFTER CONSTRUCTION OF NEW IMPROVEMENTS. SEE PAGE 2 FOR DETAILS.

A description of the physical condition of the monument as found and as set or reset: _____

FOUND AND SET POINTS AS SHOWN ON PAGE 2.

SURVEYOR'S STATEMENT

This Corner Record was prepared by me or under my direction in conformance with

the Land Surveyor's Act on MAY 15, 20 13

Signed Patrick M. Rei P.L.S. or R.C.E. No. 8178

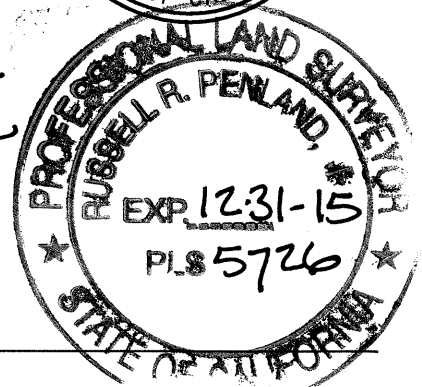
**COUNTY SURVEYOR'S STATEMENT**

This Corner Record was received 5-23 - 20 14

and examined and filed 6-29 - 20 14

Signed Russell R. Penland P.L.S. or R.C.E. No. 5726

Title COUNTY SURVEYOR

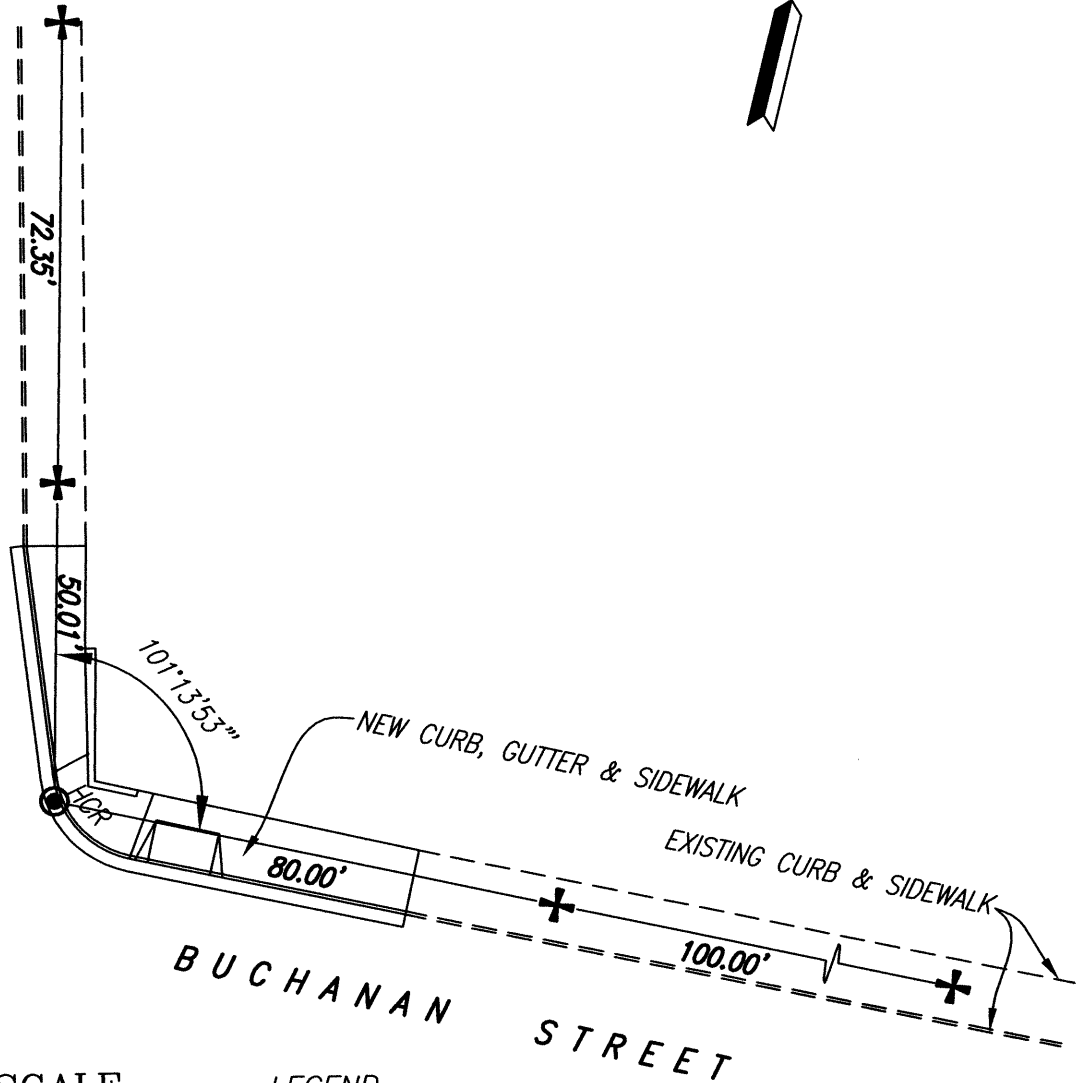


County Surveyor's Comment: _____

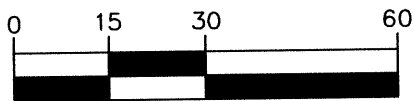
KSR JOB# 19180 0



PIERCE STREET



GRAPHIC SCALE



(IN FEET)
1 inch = 30 ft.

LEGEND

HCR = HANDICAP RAMP

+ = FOUND CUT CROSS IN SIDEWALK PER XX CR XX

⊙ = SET 2" BRASS DISC IN CONCRETE GUTTER
"MON 3669 LS 8178"